

## OCM2 Polyclonal Antibody

Catalog No: #29833

Package Size: #29833-1 50ul #29833-2 100ul

Orders: [order@signalwayantibody.com](mailto:order@signalwayantibody.com)Support: [tech@signalwayantibody.com](mailto:tech@signalwayantibody.com)

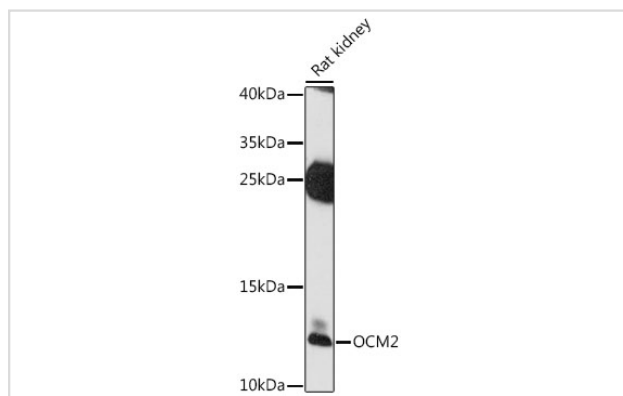
## Description

Product Name	OCM2 Polyclonal Antibody
Host Species	Rabbit
Clonality	Polyclonal
Isotype	IgG
Purification	Affinity purification
Applications	WB
Species Reactivity	Rat
Immunogen Description	Recombinant fusion protein of human OCM2 (NP_006179.2).
Other Names	OCM2; OCM; oncomodulin 2
Accession No.	Swiss-Prot#:P0CE71NCBI Gene ID:4951
Uniprot	P0CE71
GeneID	4951;
Calculated MW	12kDa
Formulation	Avoid freeze / thaw cycles. Buffer: PBS with 50% glycerol, pH7.4.
Storage	Store at -20°C

## Application Details

WB 1:500 - 1:2000

## Images



Western blot analysis of extracts of rat kidney, using OCM2 at 1:1000 dilution.

## Background

This gene is similar to the oncomodulin gene, a high-affinity calcium ion-binding protein that belongs to the superfamily of calmodulin proteins, also known as the EF-hand proteins.

---

Note: This product is for in vitro research use only