

SLC26A4 Polyclonal Antibody

Catalog No: #29834



Package Size: #29834-1 50ul #29834-2 100ul

Orders: order@signalwayantibody.com
Support: tech@signalwayantibody.com

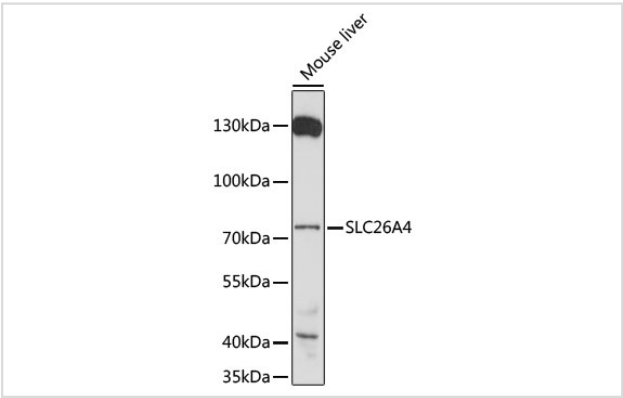
Description

Product Name	SLC26A4 Polyclonal Antibody
Host Species	Rabbit
Clonality	Polyclonal
Isotype	IgG
Purification	Affinity purification
Applications	WB
Species Reactivity	Mouse
Immunogen Description	A synthetic peptide of human SLC26A4 (NP_000432.1).
Other Names	SLC26A4; DFNB4; EVA; PDS; TDH2B; pendrin
Accession No.	Swiss-Prot#:O43511NCBI Gene ID:5172
Uniprot	O43511
GeneID	5172;
Calculated MW	86kDa
Formulation	Avoid freeze / thaw cycles. Buffer: PBS with 50% glycerol, pH7.4.
Storage	Store at -20°C

Application Details

WB 1:500 - 1:2000

Images



Western blot analysis of extracts of mouse liver, using SLC26A4 at 1:1000 dilution.

Background

Mutations in this gene are associated with Pendred syndrome, the most common form of syndromic deafness, an autosomal-recessive disease. It is highly homologous to the SLC26A3 gene; they have similar genomic structures and this gene is located 3' of the SLC26A3 gene. The encoded protein has homology to sulfate transporters.

Note: This product is for in vitro research use only