

EFS Polyclonal Antibody

Catalog No: #29850

Package Size: #29850-1 50ul #29850-2 100ul

Orders: order@signalwayantibody.comSupport: tech@signalwayantibody.com

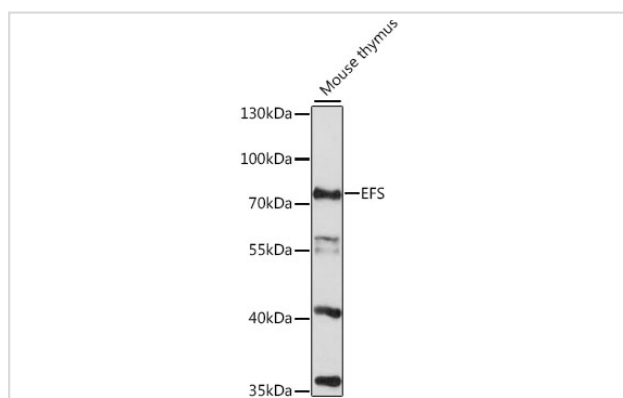
Description

Product Name	EFS Polyclonal Antibody
Host Species	Rabbit
Clonality	Polyclonal
Isotype	IgG
Purification	Affinity purification
Applications	WB
Species Reactivity	Mouse
Immunogen Description	Recombinant fusion protein of human EFS (NP_115835.1).
Other Names	EFS; CAS3; CASS3; EFS1; EFS2; HEFS; SIN; embryonal Fyn-associated substrate
Accession No.	Swiss-Prot#:O43281NCBI Gene ID:10278
Uniprot	O43281
GeneID	10278;
Calculated MW	75kDa
Formulation	Avoid freeze / thaw cycles. Buffer: PBS with 50% glycerol, pH7.4.
Storage	Store at -20°C

Application Details

WB □ 1:500 - 1:2000

Images



Western blot analysis of extracts of mouse thymus, using EFS at 1:1000 dilution.

Background

The longest protein isoform encoded by this gene contains an SH3 domain, which is known to be important in intracellular signal transduction. The protein encoded by a similar gene in mice was shown to bind to SH3 domains of protein-tyrosine kinases. The function of this gene is unknown. Three alternatively spliced variants encoding different isoforms have been described for this gene.

Note: This product is for in vitro research use only