

Heparanase 1 Polyclonal Antibody

Catalog No: #29852

Package Size: #29852-1 50ul #29852-2 100ul

Orders: order@signalwayantibody.com
Support: tech@signalwayantibody.com

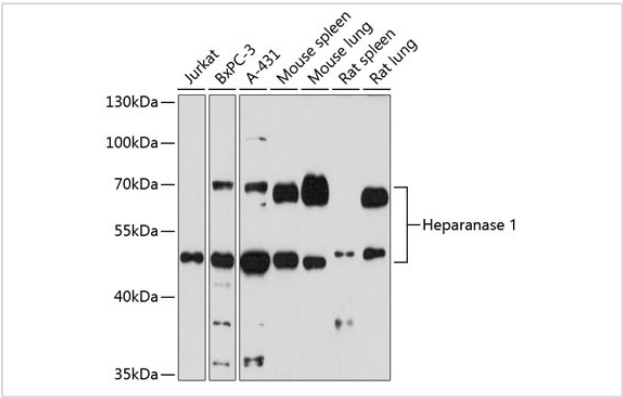
Description

Product Name	Heparanase 1 Polyclonal Antibody
Host Species	Rabbit
Clonality	Polyclonal
Isotype	IgG
Purification	Affinity purification
Applications	WB,IHC,IF
Species Reactivity	Human,Mouse,Rat
Immunogen Description	Recombinant protein of human Heparanase 1
Other Names	HPSE; HPA; HPA1; HPR1; HPSE1; HSE1; heparanase
Accession No.	Swiss-Prot#:Q9Y251NCBI Gene ID:10855
Uniprot	Q9Y251
GeneID	10855;
Calculated MW	50kDa/65kDa
Formulation	Avoid freeze / thaw cycles. Buffer: PBS with 50% glycerol, pH7.4.
Storage	Store at -20°C

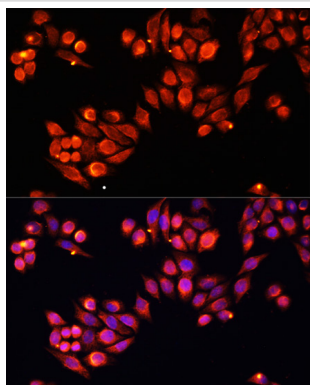
Application Details

WB 1:500 - 1:2000IHC 1:50 - 1:200IF 1:50 - 1:200

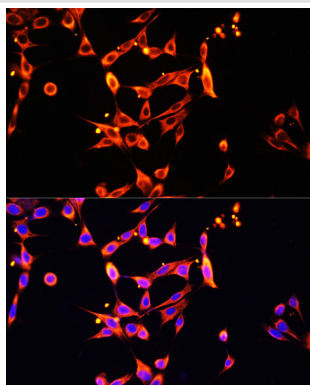
Images



Western blot analysis of extracts of various cells, using Heparanase 1 at 1:1000 dilution.



Immunofluorescence analysis of HeLa cells using Heparanase 1 at dilution of 1:100. Blue: DAPI for nuclear staining.



Immunofluorescence analysis of NIH/3T3 cells using Heparanase 1 at dilution of 1:100. Blue: DAPI for nuclear staining.

Background

Heparan sulfate proteoglycans are major components of the basement membrane and extracellular matrix. The protein encoded by this gene is an enzyme that cleaves heparan sulfate proteoglycans to permit cell movement through remodeling of the extracellular matrix. In addition, this cleavage can release bioactive molecules from the extracellular matrix. Several transcript variants encoding different isoforms have been found for this gene.

Note: This product is for in vitro research use only