

KATNA1 Polyclonal Antibody

Catalog No: #29854

Package Size: #29854-1 50ul #29854-2 100ul

Orders: order@signalwayantibody.comSupport: tech@signalwayantibody.com

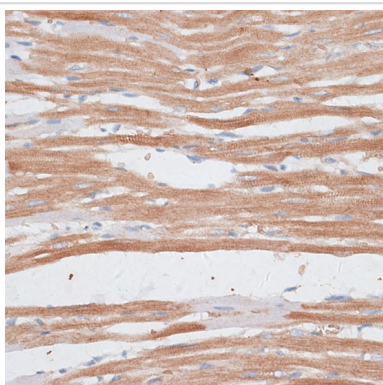
Description

Product Name	KATNA1 Polyclonal Antibody
Host Species	Rabbit
Clonality	Polyclonal
Isotype	IgG
Purification	Affinity purification
Applications	WB,IHC
Species Reactivity	Human,Mouse,Rat
Immunogen Description	Recombinant fusion protein of human KATNA1 (NP_001191005.1).
Other Names	KATNA1; katanin catalytic subunit A1
Accession No.	Swiss-Prot#:O75449NCBI Gene ID:11104
Uniprot	O75449
GeneID	11104;
Formulation	Avoid freeze / thaw cycles. Buffer: PBS with 50% glycerol, pH7.4.
Storage	Store at -20°C

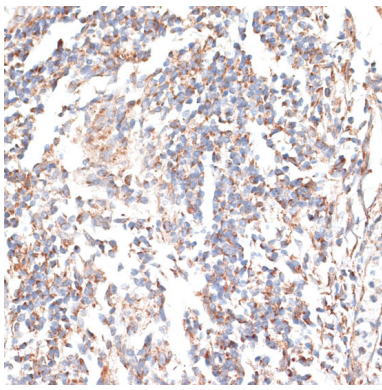
Application Details

WB□1:1000 - 1:2000IHC□1:50 - 1:200

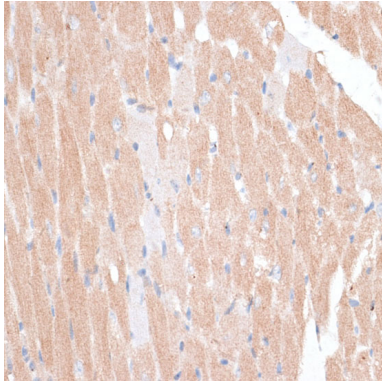
Images



Immunohistochemistry of paraffin-embedded rat heart using KATNA1 at dilution of 1:100 (40x lens).



Immunohistochemistry of paraffin-embedded human tonsil using KATNA1 at dilution of 1:100 (40x lens).



Immunohistochemistry of paraffin-embedded mouse heart using KATNA1 at dilution of 1:100 (40x lens).

Background

Microtubules, polymers of alpha and beta tubulin subunits, form the mitotic spindle of a dividing cell and help to organize membranous organelles during interphase. Katanin is a heterodimer that consists of a 60 kDa ATPase (p60 subunit A 1) and an 80 kDa accessory protein (p80 subunit B 1). The p60 subunit acts to sever and disassemble microtubules, while the p80 subunit targets the enzyme to the centrosome. This gene encodes the p80 subunit. This protein is a member of the AAA family of ATPases. Multiple alternatively spliced variants, encoding the same protein, have been identified.

Note: This product is for in vitro research use only