

CRTAC1 Polyclonal Antibody

Catalog No: #29871

Package Size: #29871-1 50ul #29871-2 100ul

Orders: order@signalwayantibody.comSupport: tech@signalwayantibody.com

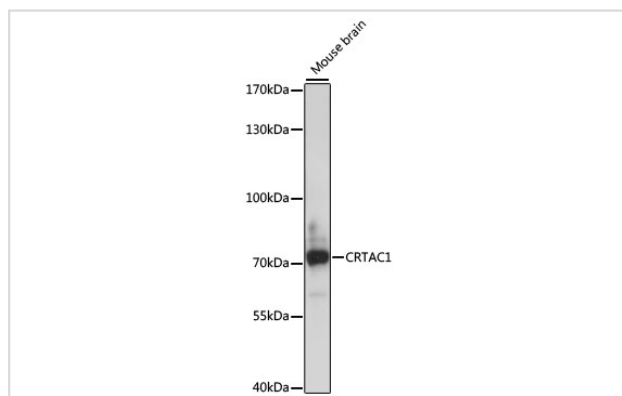
Description

Product Name	CRTAC1 Polyclonal Antibody
Host Species	Rabbit
Clonality	Polyclonal
Isotype	IgG
Purification	Affinity purification
Applications	WB
Species Reactivity	Mouse
Immunogen Description	Recombinant fusion protein of human CRTAC1 (NP_060528.3).
Other Names	CRTAC1; ASPIC; ASPIC1; CEP-68; cartilage acidic protein 1
Accession No.	Swiss-Prot#:Q9NQ79NCBI Gene ID:55118
Uniprot	Q9NQ79
GeneID	55118;
Calculated MW	71kDa
Formulation	Avoid freeze / thaw cycles. Buffer: PBS with 50% glycerol, pH7.4.
Storage	Store at -20°C

Application Details

WB 1:500 - 1:2000

Images



Western blot analysis of extracts of mouse brain, using CRTAC1 at 1:1000 dilution.

Background

This gene encodes a glycosylated extracellular matrix protein that is found in the interterritorial matrix of articular deep zone cartilage. This protein is used as a marker to distinguish chondrocytes from osteoblasts and mesenchymal stem cells in culture. The presence of FG-GAP motifs and an RGD integrin-binding motif suggests that this protein may be involved in cell-cell or cell-matrix interactions. Copy number alterations in this gene have been observed in neurofibromatosis type 1-associated glomus tumors. Alternative splicing results in multiple transcript variants.

Note: This product is for in vitro research use only