

PMEPA1 Polyclonal Antibody

Catalog No: #29880



Package Size: #29880-1 50ul #29880-2 100ul

Orders: [order@signalwayantibody.com](mailto:order@signalwayantibody.com)  
Support: [tech@signalwayantibody.com](mailto:tech@signalwayantibody.com)

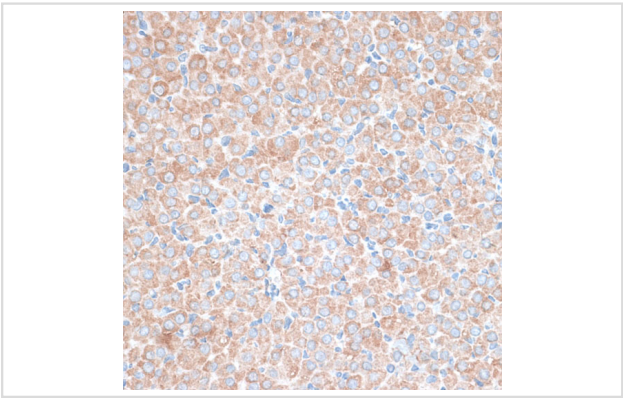
Description

Product Name	PMEPA1 Polyclonal Antibody
Host Species	Rabbit
Clonality	Polyclonal
Isotype	IgG
Purification	Affinity purification
Applications	WB,IHC,IF
Species Reactivity	Human,Mouse,Rat
Immunogen Description	Recombinant fusion protein of human PMEPA1 (NP_954638.1).
Other Names	PMEPA1; STAG1; TMEPAI; protein TMEPAI
Accession No.	Swiss-Prot#:Q969W9NCBI Gene ID:56937
Uniprot	Q969W9
GeneID	56937;
Calculated MW	Refer to figures
Formulation	Avoid freeze / thaw cycles. Buffer: PBS with 50% glycerol, pH7.4.
Storage	Store at -20°C

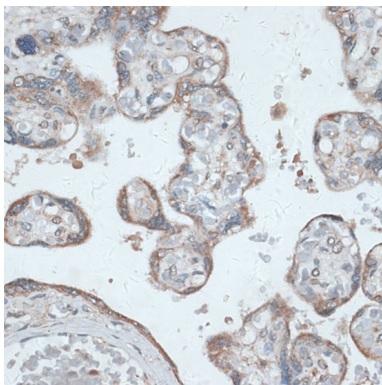
Application Details

WB□1:500 - 1:2000IHC□1:50 - 1:200IF□1:50 - 1:200

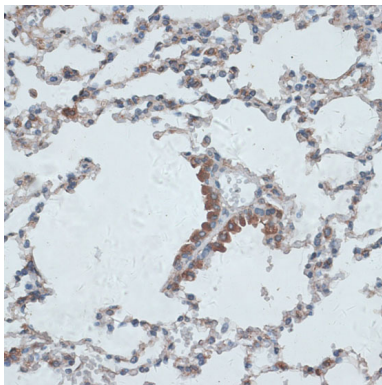
Images



Immunohistochemistry of paraffin-embedded rat ovary using PMEPA1 at dilution of 1:100 (40x lens).



Immunohistochemistry of paraffin-embedded human placenta using PMEPA1 at dilution of 1:100 (40x lens).



Immunohistochemistry of paraffin-embedded mouse lung using PMEPA1 at dilution of 1:100 (40x lens).

## Background

This gene encodes a transmembrane protein that contains a Smad interacting motif (SIM). Expression of this gene is induced by androgens and transforming growth factor beta, and the encoded protein suppresses the androgen receptor and transforming growth factor beta signaling pathways through interactions with Smad proteins. Overexpression of this gene may play a role in multiple types of cancer. Alternatively spliced transcript variants encoding multiple isoforms have been observed for this gene.

Note: This product is for in vitro research use only