

DPP10 Polyclonal Antibody

Catalog No: #29884

Package Size: #29884-1 50ul #29884-2 100ul

Orders: order@signalwayantibody.comSupport: tech@signalwayantibody.com

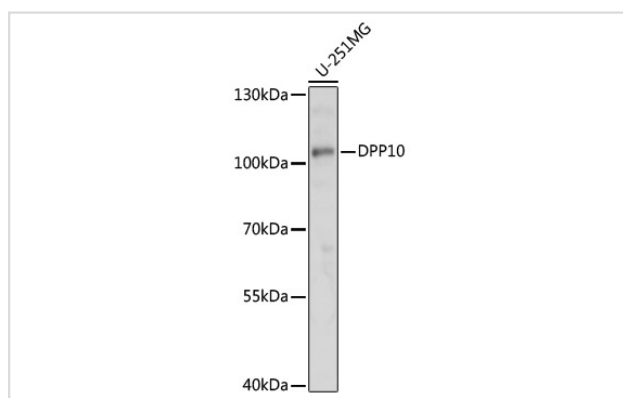
Description

Product Name	DPP10 Polyclonal Antibody
Host Species	Rabbit
Clonality	Polyclonal
Isotype	IgG
Purification	Affinity purification
Applications	WB
Species Reactivity	Human
Immunogen Description	A synthetic peptide of human DPP10 (NP_001308842.1).
Other Names	DPP10; DPL2; DPPY; DPRP-3; DPRP3; dipeptidyl peptidase like 10
Accession No.	Swiss-Prot#:Q8N608NCBI Gene ID:57628
Uniprot	Q8N608
GeneID	57628;
Calculated MW	110kDa
Formulation	Avoid freeze / thaw cycles. Buffer: PBS with 50% glycerol, pH7.4.
Storage	Store at -20°C

Application Details

WB 1:500 - 1:2000

Images



Western blot analysis of extracts of U-251MG cells, using DPP10 at 1:1000 dilution.

Background

This gene encodes a single-pass type II membrane protein that is a member of the S9B family in clan SC of the serine proteases. This protein has no detectable protease activity, most likely due to the absence of the conserved serine residue normally present in the catalytic domain of serine proteases. However, it does bind specific voltage-gated potassium channels and alters their expression and biophysical properties. Mutations in this gene have been associated with asthma. Alternate transcriptional splice variants, encoding different isoforms, have been characterized.

Note: This product is for in vitro research use only