

PPM1K Polyclonal Antibody

Catalog No: #29905



Package Size: #29905-1 50ul #29905-2 100ul

Orders: order@signalwayantibody.com
Support: tech@signalwayantibody.com

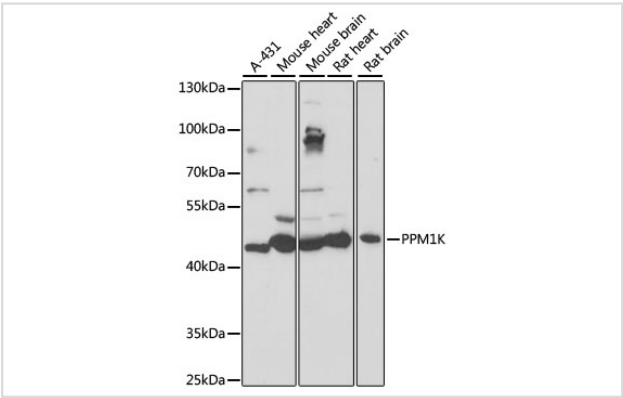
Description

Product Name	PPM1K Polyclonal Antibody
Host Species	Rabbit
Clonality	Polyclonal
Isotype	IgG
Purification	Affinity purification
Applications	WB
Species Reactivity	Human,Mouse,Rat
Immunogen Description	Recombinant fusion protein of human PPM1K (NP_689755.3).
Other Names	PPM1K; BDP; MSUDMV; PP2Ckappa; PP2Cm; PTMP; UG0882E07; protein phosphatase 1K, mitochondrial
Accession No.	Swiss-Prot#:Q8N3J5NCBI Gene ID:152926
Uniprot	Q8N3J5
GeneID	152926;
Calculated MW	41kDa
Formulation	Avoid freeze / thaw cycles. Buffer: PBS with 50% glycerol, pH7.4.
Storage	Store at -20°C

Application Details

WB 1:500 - 1:2000

Images



Western blot analysis of extracts of various cell lines, using PPM1K at 1:1000 dilution.

Background

This gene encodes a member of the PPM family of Mn²⁺/Mg²⁺-dependent protein phosphatases. The encoded protein, essential for cell survival and development, is targeted to the mitochondria where it plays a key role in regulation of the mitochondrial permeability transition pore.

Note: This product is for in vitro research use only