

# FREM1 Polyclonal Antibody

Catalog No: #29906



Package Size: #29906-1 50ul #29906-2 100ul

Orders: [order@signalwayantibody.com](mailto:order@signalwayantibody.com)  
Support: [tech@signalwayantibody.com](mailto:tech@signalwayantibody.com)

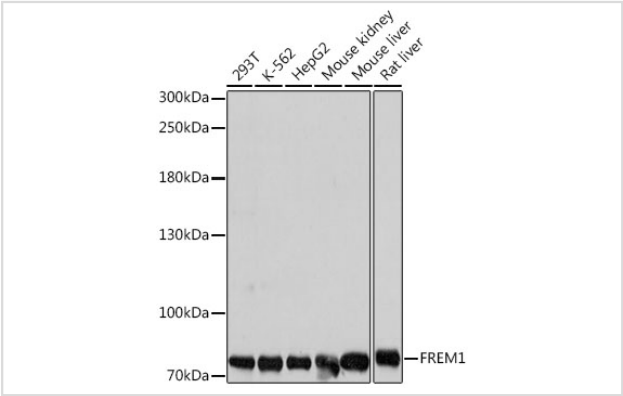
## Description

Product Name	FREM1 Polyclonal Antibody
Host Species	Rabbit
Clonality	Polyclonal
Isotype	IgG
Purification	Affinity purification
Applications	WB
Species Reactivity	Human,Mouse,Rat
Immunogen Description	Recombinant fusion protein of human FREM1 (NP_659403.4).
Other Names	FREM1; BNAR; C9orf143; C9orf145; C9orf154; MOTA; TILRR; TRIGNO2; FRAS1 related extracellular matrix 1
Accession No.	Swiss-Prot#:Q5H8C1NCBI Gene ID:158326
Uniprot	Q5H8C1
GeneID	158326;
Calculated MW	72kDa
Formulation	Avoid freeze / thaw cycles. Buffer: PBS with 50% glycerol, pH7.4.
Storage	Store at -20°C

## Application Details

WB 1:500 - 1:2000

## Images



Western blot analysis of extracts of various cell lines, using FREM1 at 1:1000 dilution.

## Background

This gene encodes a basement membrane protein that may play a role in craniofacial and renal development. Mutations in this gene have been associated with bifid nose with or without anorectal and renal anomalies. Alternatively spliced transcript variants encoding different isoforms have been described. PubMed ID 19940113 describes one such variant that initiates transcription within a distinct, internal exon; the resulting shorter isoform

(named Toll-like/interleukin-1 receptor regulator, TILRR) is suggested to be a co-receptor of the interleukin 1 receptor family and may regulate receptor function and Toll-like receptor/interleukin 1 receptor signal transduction, contributing to the control of inflammatory response activation.

---

Note: This product is for in vitro research use only