

# RBMY1F Polyclonal Antibody

Catalog No: #29907



Package Size: #29907-1 50ul #29907-2 100ul

Orders: [order@signalwayantibody.com](mailto:order@signalwayantibody.com)  
Support: [tech@signalwayantibody.com](mailto:tech@signalwayantibody.com)

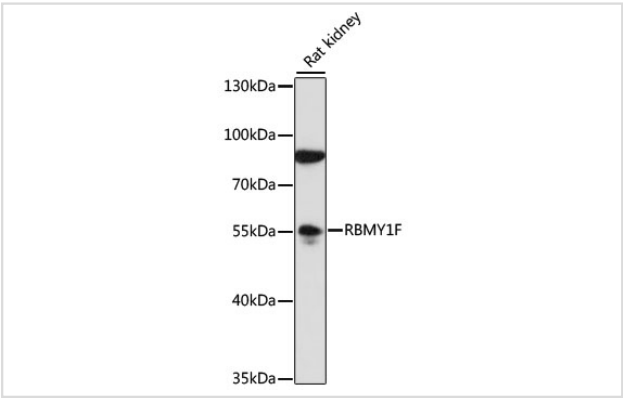
## Description

Product Name	RBMY1F Polyclonal Antibody
Host Species	Rabbit
Clonality	Polyclonal
Isotype	IgG
Purification	Affinity purification
Applications	WB
Species Reactivity	Rat
Immunogen Description	Recombinant fusion protein of human RBMY1F (NP_689798.1).
Other Names	RBMY1F; YRRM2; RNA binding motif protein, Y-linked, family 1, member F
Accession No.	Swiss-Prot#:Q15415NCBI Gene ID:159163
Uniprot	Q15415
GeneID	159163;378951;
Calculated MW	56kDa
Formulation	Avoid freeze / thaw cycles. Buffer: PBS with 50% glycerol, pH7.4.
Storage	Store at -20°C

## Application Details

WB 1:500 - 1:2000

## Images



Western blot analysis of extracts of rat kidney, using RBMY1F at 1:1000 dilution.

## Background

This gene encodes a protein containing an RNA-binding motif in the N-terminus and four SRGY (serine, arginine, glycine, tyrosine) boxes in the C-terminus. Multiple copies of this gene are found in the AZFb azoospermia factor region of chromosome Y and the encoded protein is thought to be involved in spermatogenesis. Most copies of this locus are pseudogenes, although six highly similar copies have full-length ORFs and are considered functional. Four functional copies of this gene are found within inverted repeat IR2; two functional copies of this gene are found in palindrome P3,

along with two copies of PTPN13-like, Y-linked.

---

Note: This product is for in vitro research use only