

NPB Polyclonal Antibody

Catalog No: #29914



Package Size: #29914-1 50ul #29914-2 100ul

Orders: order@signalwayantibody.com
Support: tech@signalwayantibody.com

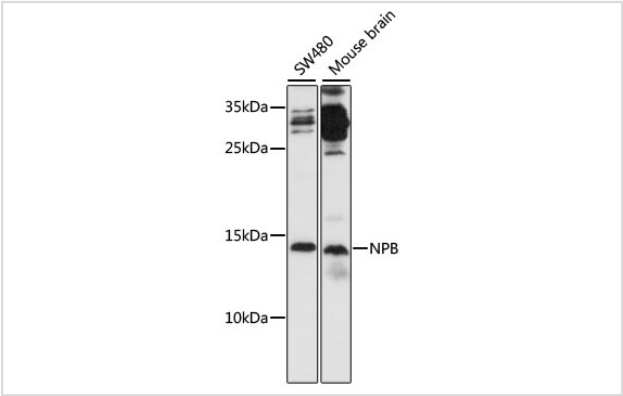
Description

Product Name	NPB Polyclonal Antibody
Host Species	Rabbit
Clonality	Polyclonal
Isotype	IgG
Purification	Affinity purification
Applications	WB,IF
Species Reactivity	Human,Mouse
Immunogen Description	Recombinant fusion protein of human NPB (NP_683694.1).
Other Names	NPB;L7;PPL7;PPNPB
Accession No.	Uniprot:Q8NG41GeneID:256933
Uniprot	Q8NG41
GeneID	256933
Calculated MW	13kDa
SDS-PAGE MW	13kDa
Formulation	PBS with 0.02% sodium azide,50% glycerol,pH7.3.
Storage	Store at -20°C. Avoid freeze / thaw cycles.

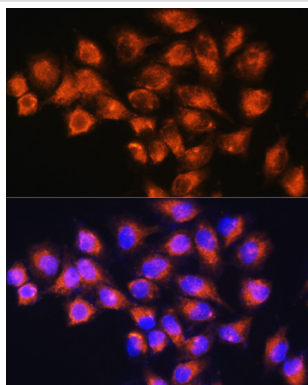
Application Details

WB 1:500 - 1:2000IF 1:50 - 1:200

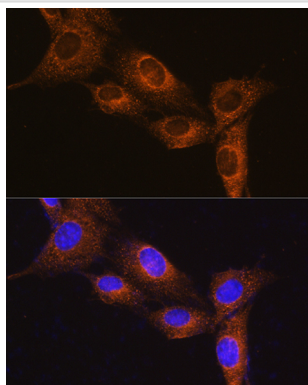
Images



Western blot analysis of extracts of various cell lines, using NPB antibody.



Immunofluorescence analysis of HeLa cells using NPB Rabbit pAb.



Immunofluorescence analysis of NIH/3T3 cells using NPB Rabbit pAb.

Background

This gene encodes a member of the neuropeptide B/W family of proteins and preproprotein that is proteolytically processed to generate multiple protein products. The encoded products include neuropeptide B-23 and a C-terminally extended form, neuropeptide B-29, which are characterized by an N-terminal brominated tryptophan amino acid. Both of the encoded peptides bind with higher affinity to neuropeptide B/W (NPB/W) receptor 1 compared to the related NPB/W receptor 2. These peptides may regulate feeding, pain perception, and stress in rodents.

Note: This product is for in vitro research use only