

## NOMO2 Polyclonal Antibody

Catalog No: #29915

Package Size: #29915-1 50ul #29915-2 100ul

Orders: [order@signalwayantibody.com](mailto:order@signalwayantibody.com)Support: [tech@signalwayantibody.com](mailto:tech@signalwayantibody.com)

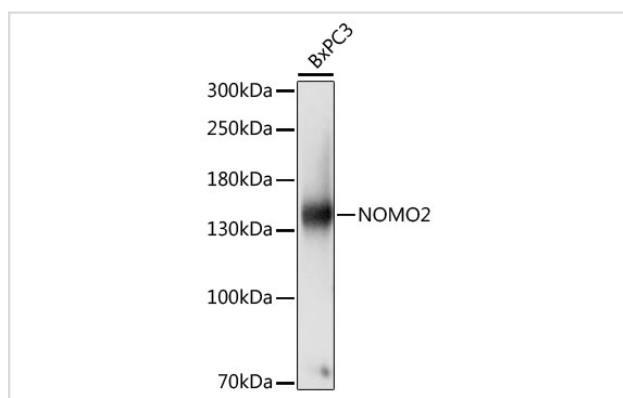
## Description

Product Name	NOMO2 Polyclonal Antibody
Host Species	Rabbit
Clonality	Polyclonal
Isotype	IgG
Purification	Affinity purification
Applications	WB
Species Reactivity	Human
Immunogen Description	Recombinant fusion protein of human NOMO2 (NP_001004060.1).
Other Names	NOMO2; Nomo; PM5; nodal modulator 2
Accession No.	Swiss-Prot#:Q5JPE7NCBI Gene ID:283820
Uniprot	Q5JPE7
GeneID	283820;
Calculated MW	139kDa
Formulation	Avoid freeze / thaw cycles. Buffer: PBS with 50% glycerol, pH7.4.
Storage	Store at -20°C

## Application Details

WB 1:500 - 1:2000

## Images



Western blot analysis of extracts of BxPC3 cells, using NOMO2 at 1:1000 dilution.

## Background

This gene encodes a protein originally thought to be related to the collagenase gene family. This gene is one of three highly similar genes in a region of duplication located on the p arm of chromosome 16. These three genes encode closely related proteins that may have the same function. The protein encoded by one of these genes has been identified as part of a protein complex that participates in the Nodal signaling pathway during vertebrate development. Mutations in ABCC6, which is located nearby, rather than mutations in this gene are associated with pseudoxanthoma

elasticum (PXE). Two transcripts encoding different isoforms have been described.

---

Note: This product is for in vitro research use only