

METTL1 Polyclonal Antibody

Catalog No: #29925



Package Size: #29925-1 50ul #29925-2 100ul

Orders: order@signalwayantibody.com
Support: tech@signalwayantibody.com

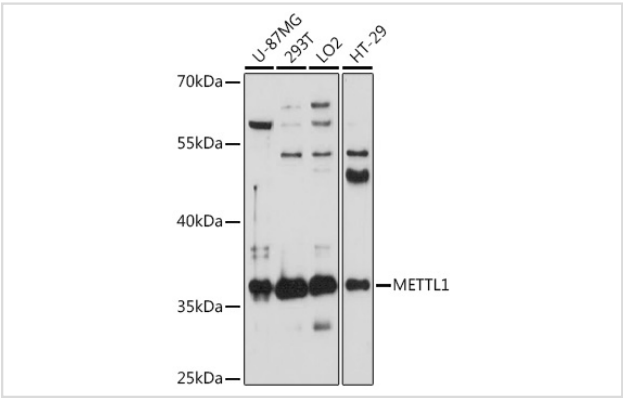
Description

Product Name	METTL1 Polyclonal Antibody
Host Species	Rabbit
Clonality	Polyclonal
Isotype	IgG
Purification	Affinity purification
Applications	WB
Species Reactivity	Human
Immunogen Description	Recombinant fusion protein of human METTL1 (NP_005362.3).
Other Names	METTL1; C12orf1; TRM8; TRMT8; YDL201w; methyltransferase like 1
Accession No.	Swiss-Prot#:Q9UBP6NCBI Gene ID:4234
Uniprot	Q9UBP6
GeneID	4234;
Calculated MW	37kDa
Formulation	Avoid freeze / thaw cycles. Buffer: PBS with 50% glycerol, pH7.4.
Storage	Store at -20°C

Application Details

WB 1:500 - 1:2000

Images



Western blot analysis of extracts of various cell lines, using METTL1 at 1:3000 dilution.

Background

This gene is similar in sequence to the *S. cerevisiae* YDL201w gene. The gene product contains a conserved S-adenosylmethionine-binding motif and is inactivated by phosphorylation. Alternative splice variants encoding different protein isoforms have been described for this gene. A pseudogene has been identified on chromosome X.

Note: This product is for in vitro research use only