

RUBCN Polyclonal Antibody

Catalog No: #29926



Package Size: #29926-1 50ul #29926-2 100ul

Orders: order@signalwayantibody.com
Support: tech@signalwayantibody.com

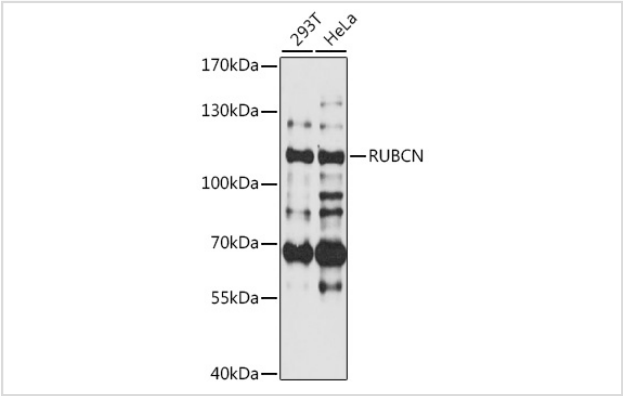
Description

Product Name	RUBCN Polyclonal Antibody
Host Species	Rabbit
Clonality	Polyclonal
Isotype	IgG
Purification	Affinity purification
Applications	WB
Species Reactivity	Human
Immunogen Description	Recombinant fusion protein of human RUBCN (NP_055502.1).
Other Names	RUBCN; KIAA0226; RUBICON; SCAR15; RUN and cysteine rich domain containing beclin 1 interacting protein
Accession No.	Swiss-Prot#:Q92622NCBI Gene ID:9711
Uniprot	Q92622
GeneID	9711;
Calculated MW	108kDa
Formulation	Avoid freeze / thaw cycles. Buffer: PBS with 50% glycerol, pH7.4.
Storage	Store at -20°C

Application Details

WB 1:500 - 1:2000

Images



Western blot analysis of extracts of various cell lines, using RUBCN at 1:3000 dilution.

Background

The protein encoded by this gene is a negative regulator of autophagy and endocytic trafficking and controls endosome maturation. This protein contains two conserved domains, an N-terminal RUN domain and a C-terminal DUF4206 domain. The RUN domain is involved in Ras-like GTPase signaling, and the DUF4206 domain contains a diacylglycerol (DAG) binding-like motif. Mutation in this gene results in deletion of the DAG binding-like

motif and causes a recessive ataxia. Alternatively spliced transcript variants encoding distinct isoforms have been found for this gene.

Note: This product is for in vitro research use only