

SELENOM Polyclonal Antibody

Catalog No: #29929



Package Size: #29929-1 50ul #29929-2 100ul

Orders: order@signalwayantibody.com
Support: tech@signalwayantibody.com

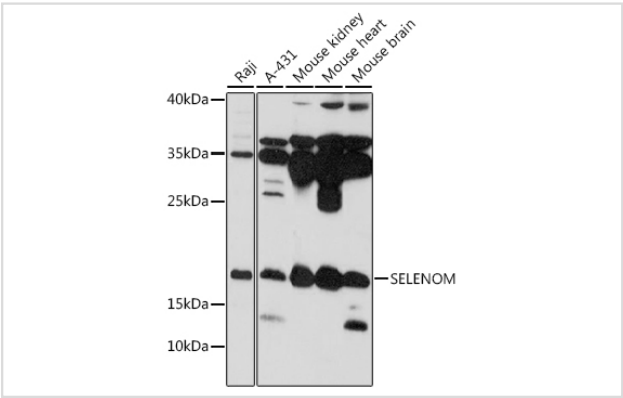
Description

Product Name	SELENOM Polyclonal Antibody
Host Species	Rabbit
Clonality	Polyclonal
Isotype	IgG
Purification	Affinity purification
Applications	WB
Species Reactivity	Human,Mouse
Immunogen Description	Recombinant fusion protein of human SELENOM (NP_536355.1).
Other Names	SELENOM; SELM; SEPM; selenoprotein M
Accession No.	Swiss-Prot#:Q8WWX9NCBI Gene ID:140606
Uniprot	Q8WWX9
GeneID	140606;
Calculated MW	16kDa
Formulation	Avoid freeze / thaw cycles. Buffer: PBS with 50% glycerol, pH7.4.
Storage	Store at -20°C

Application Details

WB 1:500 - 1:2000

Images



Western blot analysis of extracts of various cell lines, using SELENOM at 1:1000 dilution.

Background

The protein encoded by this gene belongs to the selenoprotein M/SEP15 family. The exact function of this protein is not known. It is localized in the perinuclear region, is highly expressed in the brain, and may be involved in neurodegenerative disorders. Transgenic mice with targeted deletion of this gene exhibit increased weight gain, suggesting a role for this gene in the regulation of body weight and energy metabolism. This protein is a selenoprotein, containing the rare amino acid selenocysteine (Sec). Sec is encoded by the UGA codon, which normally signals translation termination.

The 3' UTRs of selenoprotein mRNAs contain a conserved stem-loop structure, designated the Sec insertion sequence (SECIS) element, that is necessary for the recognition of UGA as a Sec codon, rather than as a stop signal.

Note: This product is for in vitro research use only