

RPL26 Polyclonal Antibody

Catalog No: #29932



Package Size: #29932-1 50ul #29932-2 100ul

Orders: order@signalwayantibody.com
Support: tech@signalwayantibody.com

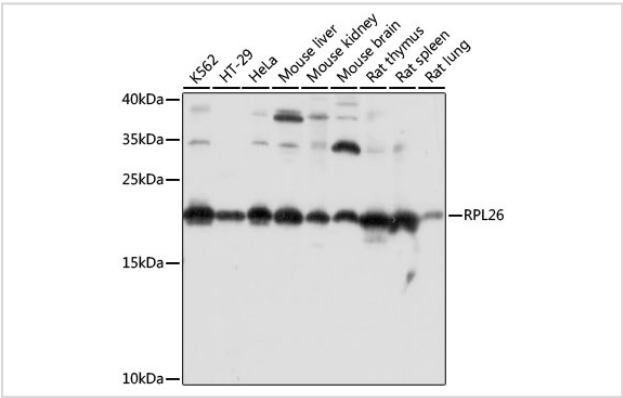
Description

Product Name	RPL26 Polyclonal Antibody
Host Species	Rabbit
Clonality	Polyclonal
Isotype	IgG
Purification	Affinity purification
Applications	WB,IF
Species Reactivity	Human,Mouse,Rat
Immunogen Description	Recombinant fusion protein of human RPL26 (NP_000978.1).
Other Names	RPL26; DBA11; L26; ribosomal protein L26
Accession No.	Swiss-Prot#:P61254NCBI Gene ID:6154
Uniprot	P61254
GeneID	6154;
Calculated MW	20kDa
Formulation	Avoid freeze / thaw cycles. Buffer: PBS with 50% glycerol, pH7.4.
Storage	Store at -20°C

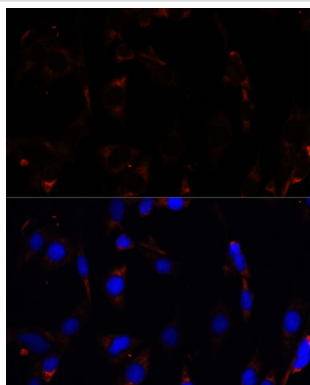
Application Details

WB 1:500 - 1:2000IF 1:50 - 1:200

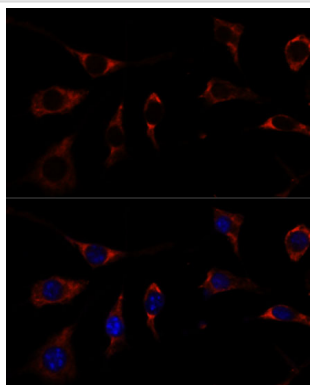
Images



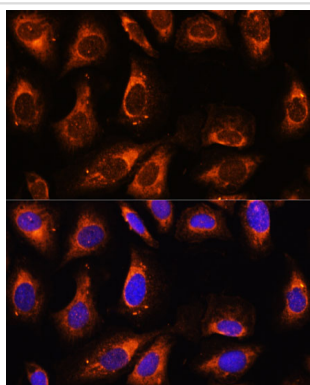
Western blot analysis of extracts of various cell lines, using RPL26 at 1:1000 dilution.



Immunofluorescence analysis of C6 cells using RPL26 at dilution of 1:100. Blue: DAPI for nuclear staining.



Immunofluorescence analysis of L929 cells using RPL26 at dilution of 1:100. Blue: DAPI for nuclear staining.



Immunofluorescence analysis of U-2 OS cells using RPL26 at dilution of 1:100. Blue: DAPI for nuclear staining.

Background

Ribosomes, the organelles that catalyze protein synthesis, consist of a small 40S subunit and a large 60S subunit. Together these subunits are composed of 4 RNA species and approximately 80 structurally distinct proteins. This gene encodes a ribosomal protein that is a component of the 60S subunit. The protein belongs to the L24P family of ribosomal proteins. It is located in the cytoplasm. As is typical for genes encoding ribosomal proteins, there are multiple processed pseudogenes of this gene dispersed through the genome. Mutations in this gene result in Diamond-Blackfan anemia. Alternative splicing results in multiple transcript variants.

Note: This product is for in vitro research use only