

ERK1 / ERK2 Polyclonal Antibody

Catalog No: #29935



Package Size: #29935-1 50ul #29935-2 100ul

Orders: order@signalwayantibody.com
Support: tech@signalwayantibody.com

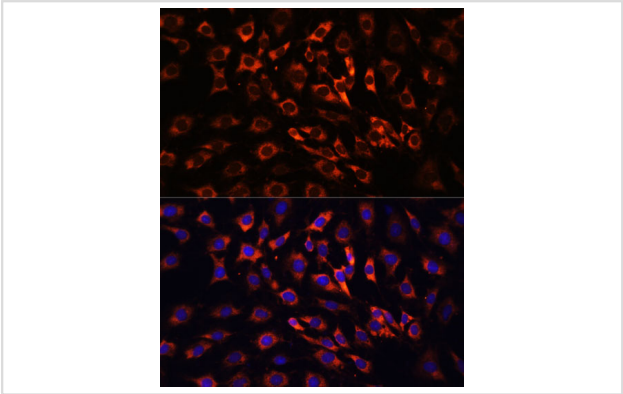
Description

Product Name	ERK1 / ERK2 Polyclonal Antibody
Host Species	Rabbit
Clonality	Polyclonal
Isotype	IgG
Purification	Affinity purification
Applications	WB,IHC,IF
Species Reactivity	Human,Mouse,Rat
Immunogen Description	Recombinant Protein of human ERK1 / ERK2
Accession No.	Swiss-Prot#:P28482/P27361NCBI Gene ID:5594/5595
Uniprot	P28482
GeneID	5594;
Calculated MW	42kDa/44kDa
Formulation	Avoid freeze / thaw cycles. Buffer: PBS with 50% glycerol, pH7.4.
Storage	Store at -20°C

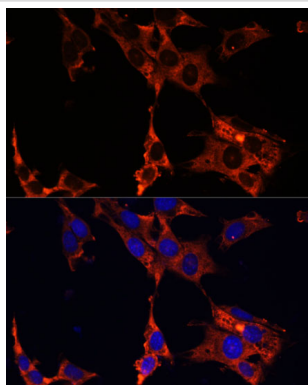
Application Details

WB 1:1000 - 1:2000IHC 1:50 - 1:200IF 1:50 - 1:200

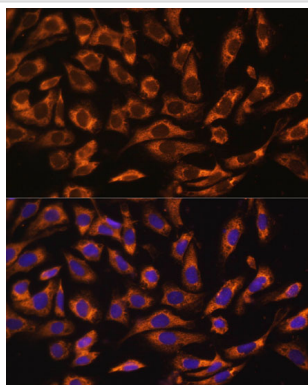
Images



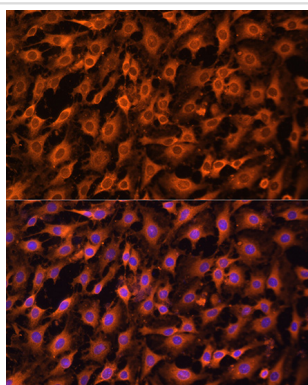
Immunofluorescence analysis of C6 cells using ERK1 / ERK2 Polyclonal at dilution of 1:100 (40x lens). Blue: DAPI for nuclear staining.



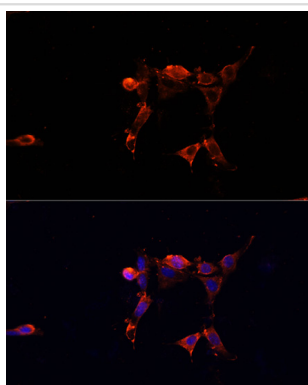
Immunofluorescence analysis of NIH-3T3 cells using ERK1 / ERK2 Polyclonal at dilution of 1:100 (40x lens). Blue: DAPI for nuclear staining.



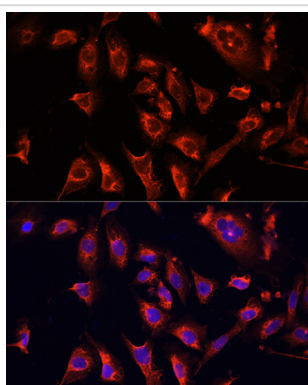
Immunofluorescence analysis of U-2 OS cells using ERK1 / ERK2 Polyclonal at dilution of 1:100 (40x lens). Blue: DAPI for nuclear staining.



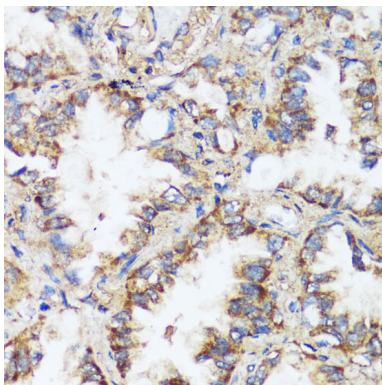
Immunofluorescence analysis of C6 cells using ERK1 / ERK2 at dilution of 1:100. Blue: DAPI for nuclear staining.



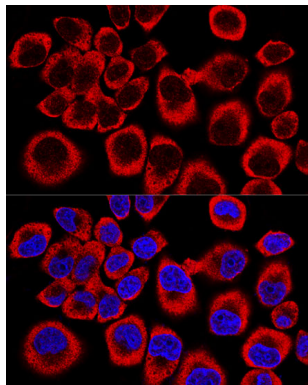
Immunofluorescence analysis of NIH/3T3 cells using ERK1 / ERK2 at dilution of 1:100. Blue: DAPI for nuclear staining.



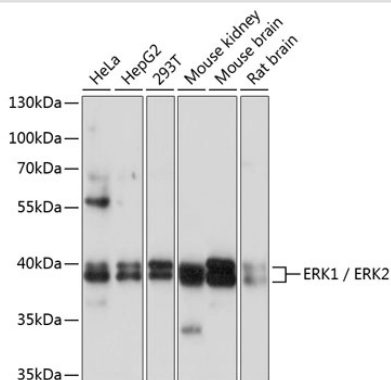
Immunofluorescence analysis of U2OS cells using ERK1 / ERK2 at dilution of 1:100. Blue: DAPI for nuclear staining.



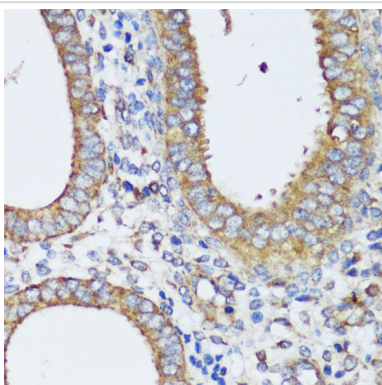
Immunohistochemistry of paraffin-embedded human lung cancer using ERK1 / ERK2 at dilution of 1:200 (40x lens).



Confocal immunofluorescence analysis of HeLa cells using ERK1 / ERK2 Polyclonal at dilution of 1:200. Blue: DAPI for nuclear staining.



Western blot analysis of extracts of various cell lines, using ERK1 / ERK2 at 1:1000 dilution.



Immunohistochemistry of paraffin-embedded human uterine cancer using ERK1 / ERK2 at dilution of 1:200 (40x lens).

Background

Note: This product is for in vitro research use only