

NKX2-2 Polyclonal Antibody

Catalog No: #29938



Package Size: #29938-1 50ul #29938-2 100ul

Orders: order@signalwayantibody.com
Support: tech@signalwayantibody.com

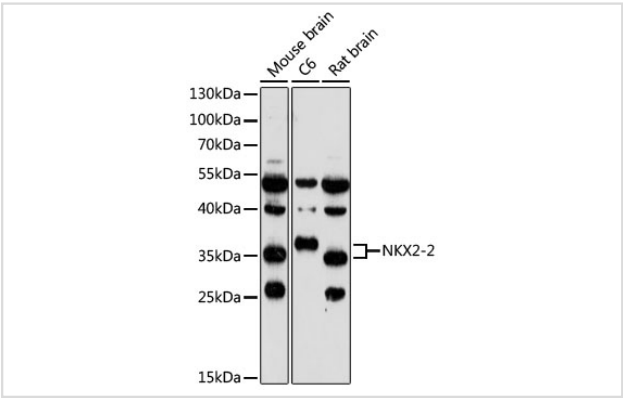
Description

Product Name	NKX2-2 Polyclonal Antibody
Host Species	Rabbit
Clonality	Polyclonal
Isotype	IgG
Purification	Affinity purification
Applications	WB
Species Reactivity	Human,Mouse,Rat
Immunogen Description	Recombinant fusion protein of human NKX2-2 (NP_002500.1).
Other Names	NKX2-2; NKX2.2; NKX2B; NK2 homeobox 2
Accession No.	Swiss-Prot#:O95096NCBI Gene ID:4821
Uniprot	O95096
GeneID	4821;
Calculated MW	38kDa
Formulation	Avoid freeze / thaw cycles. Buffer: PBS with 50% glycerol, pH7.4.
Storage	Store at -20°C

Application Details

WB 1:500 - 1:2000

Images



Western blot analysis of extracts of various cell lines, using NKX2-2 at 1:1000 dilution.

Background

The protein encoded by this gene contains a homeobox domain and may be involved in the morphogenesis of the central nervous system. This gene is found on chromosome 20 near NKX2-4, and these two genes appear to be duplicated on chromosome 14 in the form of TITF1 and NKX2-8. The encoded protein is likely to be a nuclear transcription factor.

Note: This product is for in vitro research use only