

## PRB4 Polyclonal Antibody

Catalog No: #29939

Package Size: #29939-1 50ul #29939-2 100ul

Orders: [order@signalwayantibody.com](mailto:order@signalwayantibody.com)Support: [tech@signalwayantibody.com](mailto:tech@signalwayantibody.com)

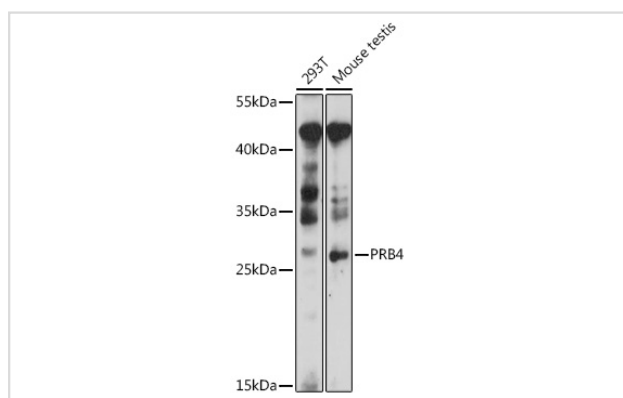
## Description

Product Name	PRB4 Polyclonal Antibody
Host Species	Rabbit
Clonality	Polyclonal
Isotype	IgG
Purification	Affinity purification
Applications	WB
Species Reactivity	Human,Mouse
Immunogen Description	Recombinant fusion protein of human PRB4 (NP_002714.2).
Other Names	PRB4; Po; basic salivary proline-rich protein 4
Accession No.	Swiss-Prot#:P10163NCBI Gene ID:5545
Uniprot	P10163
GeneID	:5545
Calculated MW	31kDa
Formulation	Avoid freeze / thaw cycles. Buffer: PBS with 50% glycerol, pH7.4.
Storage	Store at -20°C

## Application Details

WB 1:500 - 1:2000

## Images



Western blot analysis of extracts of various cell lines, using PRB4 at 1:1000 dilution.

## Background

This gene encodes a member of the heterogeneous family of basic, proline-rich, human salivary glycoproteins. The encoded preproprotein undergoes proteolytic processing to generate one or more mature peptides before secretion from the parotid glands. Multiple alleles of this gene exhibiting variations in the length of the tandem repeats have been identified. The reference genome encodes the "Small" allele. This gene is located in a cluster of closely related salivary proline-rich proteins on chromosome 12. Alternative splicing results in multiple transcript variants encoding

different isoforms that may undergo similar proteolytic processing.

---

Note: This product is for in vitro research use only