

PLA2G5 Polyclonal Antibody

Catalog No: #29944

Package Size: #29944-1 50ul #29944-2 100ul

Orders: order@signalwayantibody.comSupport: tech@signalwayantibody.com

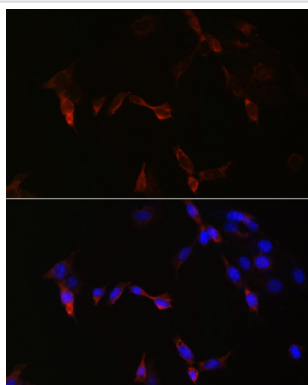
Description

Product Name	PLA2G5 Polyclonal Antibody
Host Species	Rabbit
Clonality	Polyclonal
Isotype	IgG
Purification	Affinity purification
Applications	IF
Species Reactivity	Mouse
Immunogen Description	Recombinant fusion protein of human PLA2G5 (NP_000920.1).
Other Names	PLA2G5; FRFB; GV-PLA2; PLA2-10; hVPLA(2); phospholipase A2 group V
Accession No.	Swiss-Prot#:P39877NCBI Gene ID:5322
Uniprot	P39877
GeneID	5322;
Calculated MW	Refer to figures
Formulation	Avoid freeze / thaw cycles. Buffer: PBS with 50% glycerol, pH7.4.
Storage	Store at -20°C

Application Details

IF□1:50 - 1:200

Images



Immunofluorescence analysis of NIH/3T3 cells using PLA2G5 at dilution of 1:100. Blue: DAPI for nuclear staining.

Background

This gene is a member of the secretory phospholipase A2 family. It is located in a tightly-linked cluster of secretory phospholipase A2 genes on chromosome 1. The encoded enzyme catalyzes the hydrolysis of membrane phospholipids to generate lysophospholipids and free fatty acids including arachidonic acid. It preferentially hydrolyzes linoleoyl-containing phosphatidylcholine substrates. Secretion of this enzyme is thought to induce inflammatory responses in neighboring cells. Alternatively spliced transcript variants have been found, but their full-length nature has not been

determined.

Note: This product is for in vitro research use only