

SRSF7 Polyclonal Antibody

Catalog No: #29947



Package Size: #29947-1 50ul #29947-2 100ul

Orders: order@signalwayantibody.com
Support: tech@signalwayantibody.com

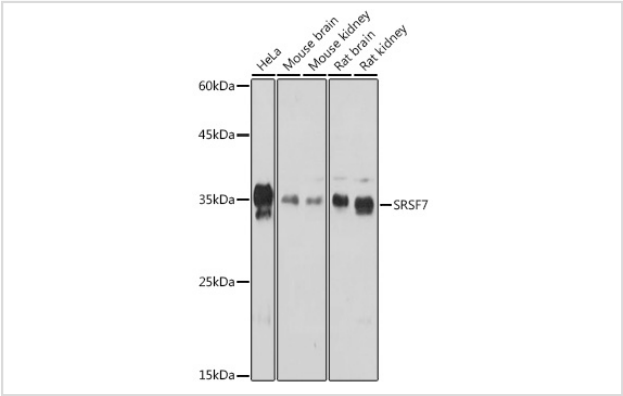
Description

Product Name	SRSF7 Polyclonal Antibody
Host Species	Rabbit
Clonality	Polyclonal
Isotype	IgG
Purification	Affinity purification
Applications	WB,IHC,IF
Species Reactivity	Human,Mouse,Rat
Immunogen Description	Recombinant fusion protein of human SRSF7 (NP_001026854).
Other Names	SRSF7;9G8;AAG3;SFRS7
Accession No.	Uniprot:Q16629GeneID:6432
Uniprot	Q16629
GeneID	6432
Calculated MW	Refer to figures
SDS-PAGE MW	35KDa
Formulation	PBS with 0.02% sodium azide,50% glycerol,pH7.3.
Storage	Store at -20°C. Avoid freeze / thaw cycles.

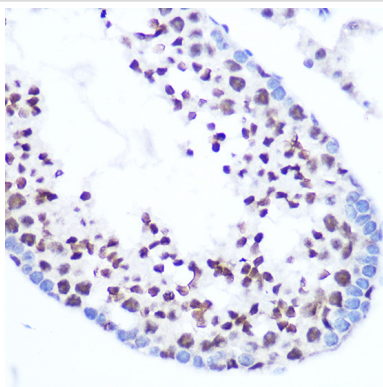
Application Details

WB1:500 - 1:1000IHC1:50 - 1:100IF1:50 - 1:100

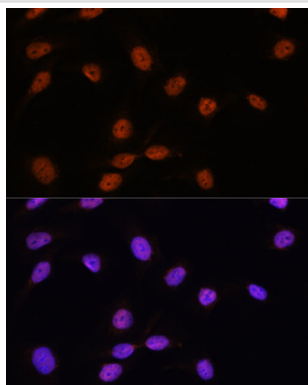
Images



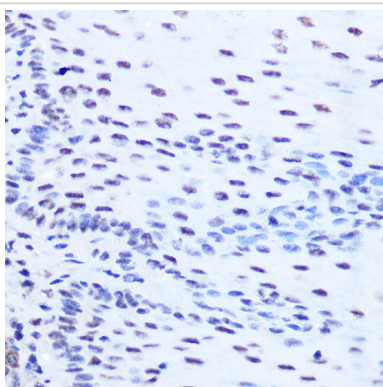
Western blot analysis of extracts of various cell lines, using SRSF7 Rabbit pAb.



Immunohistochemistry of paraffin-embedded mouse testis using SRSF7 Rabbit pAb.



Immunofluorescence analysis of U-2 OS cells using SRSF7 antibody.



Immunohistochemistry of paraffin-embedded human esophageal using SRSF7 Rabbit pAb.

Background

The protein encoded by this gene is a member of the serine/arginine (SR)-rich family of pre-mRNA splicing factors, which constitute part of the spliceosome. Each of these factors contains an RNA recognition motif (RRM) for binding RNA and an RS domain for binding other proteins. The RS domain is rich in serine and arginine residues and facilitates interaction between different SR splicing factors. In addition to being critical for mRNA splicing, the SR proteins have also been shown to be involved in mRNA export from the nucleus and in translation. Two transcript variants encoding different isoforms have been found for this gene.

Note: This product is for in vitro research use only