

# SURF4 Polyclonal Antibody

Catalog No: #29949



Package Size: #29949-1 50ul #29949-2 100ul

Orders: [order@signalwayantibody.com](mailto:order@signalwayantibody.com)  
Support: [tech@signalwayantibody.com](mailto:tech@signalwayantibody.com)

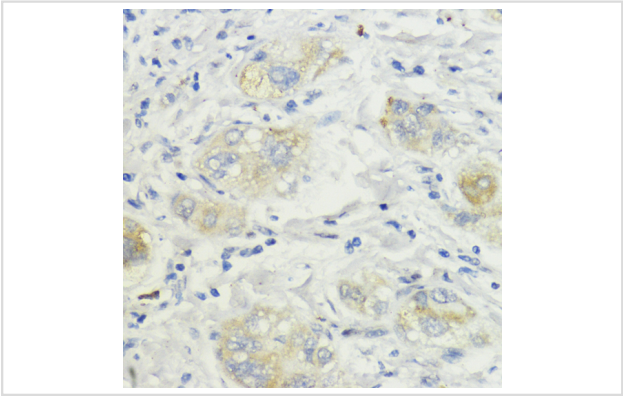
## Description

Product Name	SURF4 Polyclonal Antibody
Host Species	Rabbit
Clonality	Polyclonal
Isotype	IgG
Purification	Affinity purification
Applications	WB,IHC,IF
Species Reactivity	Human,Mouse,Rat
Immunogen Description	A synthetic peptide of human SURF4 (NP_001267719.1).
Other Names	SURF4; ERV29; surfeit 4
Accession No.	Swiss-Prot#:O15260NCBI Gene ID:6836
Uniprot	O15260
GeneID	6836;
Calculated MW	30kDa
Formulation	Avoid freeze / thaw cycles. Buffer: PBS with 50% glycerol, pH7.4.
Storage	Store at -20°C

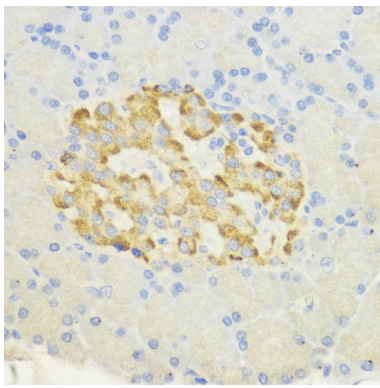
## Application Details

WB 1:500 - 1:2000IHC 1:50 - 1:200IF 1:50 - 1:200

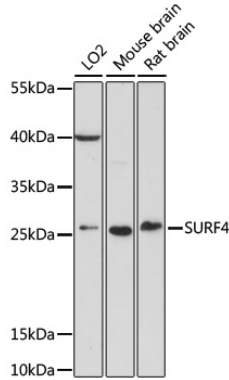
## Images



Immunohistochemistry of paraffin-embedded human liver cancer using SURF4 at dilution of 1:200 (40x lens).



Immunohistochemistry of paraffin-embedded rat pancreatic islet using SURF4 at dilution of 1:200 (40x lens).



Western blot analysis of extracts of various cell lines, using SURF4 at 1:1000 dilution.

## Background

This gene is located in the surfait gene cluster, which is comprised of very tightly linked housekeeping genes that do not share sequence similarity. The encoded protein is a conserved integral membrane protein that interacts with endoplasmic reticulum-Golgi intermediate compartment proteins. Disruption of this gene results in reduced numbers of endoplasmic reticulum-Golgi intermediate compartment clusters and redistribution of coat protein I to the cytosol. Alternate splicing results in multiple transcript variants.

Note: This product is for in vitro research use only