

HBEGF Polyclonal Antibody

Catalog No: #29957



Package Size: #29957-1 50ul #29957-2 100ul

Orders: order@signalwayantibody.com
Support: tech@signalwayantibody.com

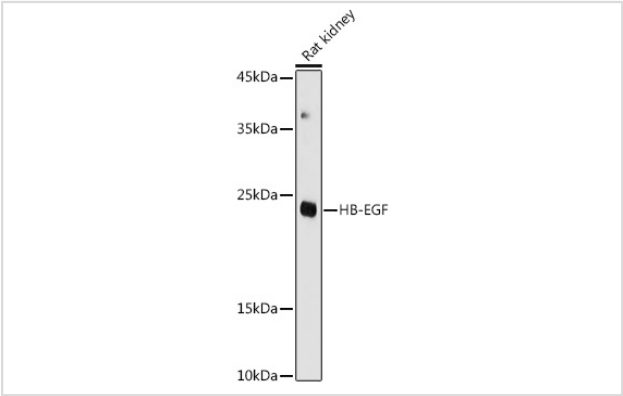
Description

Product Name	HBEGF Polyclonal Antibody
Host Species	Rabbit
Clonality	Polyclonal
Isotype	IgG
Purification	Affinity purification
Applications	WB,IF
Species Reactivity	Human,Mouse,Rat
Immunogen Description	Recombinant fusion protein of human HB-EGF (NP_001936.1).
Other Names	HBEGF;DTR;DTS;DTSF;HEGFL
Accession No.	Uniprot:Q99075GeneID:1839
Uniprot	Q99075
GeneID	1839
Calculated MW	23kDa
SDS-PAGE MW	23KDa
Formulation	PBS with 0.02% sodium azide,50% glycerol,pH7.3.
Storage	Store at -20°C. Avoid freeze / thaw cycles.

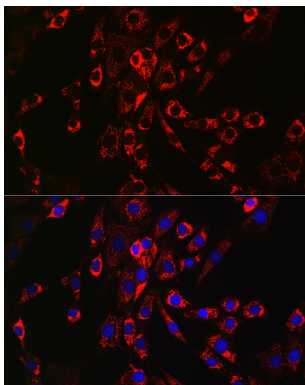
Application Details

WB 1:500 - 1:2000IF 1:50 - 1:200

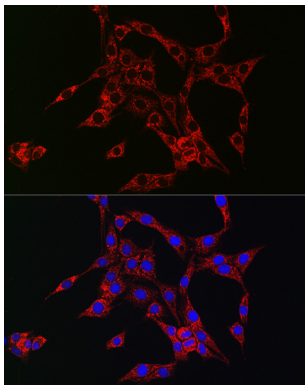
Images



Western blot analysis of extracts of Rat kidney, using HB-EGF antibody.



Immunofluorescence analysis of NIH/3T3 cells using HB-EGF Rabbit pAb.



Immunofluorescence analysis of PC-12 cells using HB-EGF Rabbit pAb.

Background

Heparin-binding EGF-like growth factor (HB-EGF) is a 12-16 kDa member of the epidermal growth factor (EGF) family. It possesses an EGF-like domain, and a heparin-binding motif. Mature HB-EGF is a soluble peptide that arises from proteolytic processing of the transmembrane form. Human HB-EGF shows 76% and 73% amino acid sequence identity with rat and mouse HB-EGF, respectively. It is required for normal cardiac valve formation and normal heart function, promotes smooth muscle cell proliferation. It may be involved in macrophage-mediated cellular proliferation; it is mitogenic for fibroblasts, but not endothelial cells. HB-EGF is classified as a group 2 ErbB ligand based on its ability to activate both the EGF/ErbB1 and ErbB4 receptors. Activity associated with ErbB4 binding appears to be limited to non-mitogenic actions, while EGFR binding induces both mitogenic and non-mitogenic activity.

Note: This product is for in vitro research use only