

PRSS23 Polyclonal Antibody

Catalog No: #29975



Package Size: #29975-1 50ul #29975-2 100ul

Orders: order@signalwayantibody.com
Support: tech@signalwayantibody.com

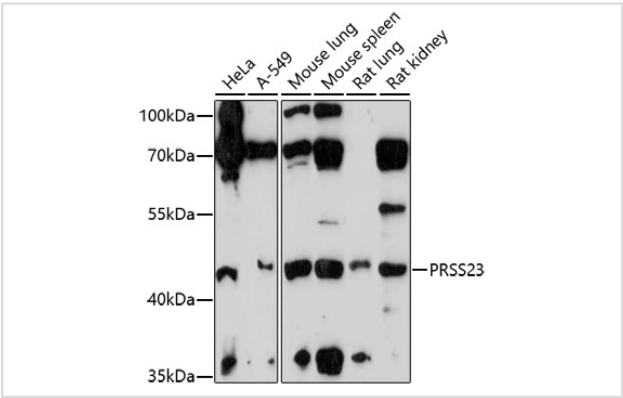
Description

| | |
|-----------------------|---|
| Product Name | PRSS23 Polyclonal Antibody |
| Host Species | Rabbit |
| Clonality | Polyclonal |
| Isotype | IgG |
| Purification | Affinity purification |
| Applications | WB,IHC |
| Species Reactivity | Human,Mouse,Rat |
| Immunogen Description | Recombinant fusion protein of human PRSS23 (NP_009104.2). |
| Other Names | PRSS23; SIG13; SPUVE; ZSIG13; serine protease 23 |
| Accession No. | Swiss-Prot#:O95084NCBI Gene ID:11098 |
| Uniprot | O95084 |
| GeneID | 11098; |
| Calculated MW | Refer to figures |
| Formulation | Avoid freeze / thaw cycles. Buffer: PBS with 50% glycerol, pH7.4. |
| Storage | Store at -20°C |

Application Details

WB 1:500 - 1:2000IHC 1:100 - 1:200

Images



Western blot analysis of extracts of various cell lines, using PRSS23 at 1:1000 dilution.

Background

This gene encodes a conserved member of the trypsin family of serine proteases. Mouse studies found a decrease of mRNA levels of this gene after ovulation was induced. Alternative splicing results in multiple transcript variants.

Note: This product is for in vitro research use only