

KAT6B Polyclonal Antibody

Catalog No: #29978



Package Size: #29978-1 50ul #29978-2 100ul

Orders: order@signalwayantibody.com
Support: tech@signalwayantibody.com

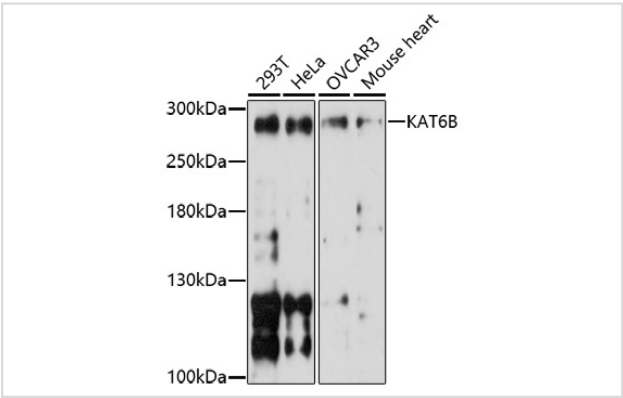
Description

Product Name	KAT6B Polyclonal Antibody
Host Species	Rabbit
Clonality	Polyclonal
Isotype	IgG
Purification	Affinity purification
Applications	WB
Species Reactivity	Human,Mouse,Rat
Immunogen Description	A synthetic peptide of human KAT6B (NP_001243398.1).
Other Names	KAT6B; GTPTS; MORF; MOZ2; MYST4; ZC2HC6B; qkf; querkopf; lysine acetyltransferase 6B
Accession No.	Swiss-Prot#:Q8WYB5NCBI Gene ID:23522
Uniprot	Q8WYB5
GeneID	23522;
Calculated MW	Refer to figures
Formulation	Avoid freeze / thaw cycles. Buffer: PBS with 50% glycerol, pH7.4.
Storage	Store at -20°C

Application Details

WB 1:500 - 1:2000

Images



Western blot analysis of extracts of various cell lines, using KAT6B at 1:1000 dilution.

Background

The protein encoded by this gene is a histone acetyltransferase and component of the MOZ/MORF protein complex. In addition to its acetyltransferase activity, the encoded protein has transcriptional activation activity in its N-terminal end and transcriptional repression activity in its C-terminal end. This protein is necessary for RUNX2-dependent transcriptional activation and could be involved in brain development. Mutations have been found in patients with genitopatellar syndrome. A translocation of this gene and the CREBBP gene results in acute myeloid leukemias. Three transcript variants

encoding different isoforms have been found for this gene.

Note: This product is for in vitro research use only