

# NDUFC1 Antibody

Catalog No: #46073



Package Size: #46073-1 50ul #46073-2 100ul

Orders: [order@signalwayantibody.com](mailto:order@signalwayantibody.com)  
Support: [tech@signalwayantibody.com](mailto:tech@signalwayantibody.com)

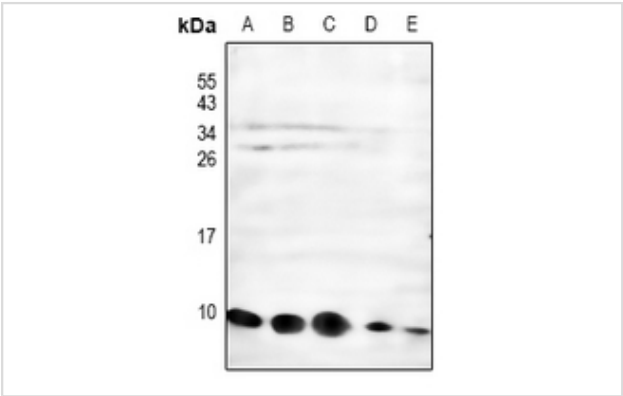
## Description

Product Name	NDUFC1 Antibody
Host Species	Rabbit
Clonality	Polyclonal
Purification	Immunogen affinity purified
Applications	WB, IH
Species Reactivity	Hu Ms
Specificity	NDUFC1 Antibody detects endogenous levels of total NDUFC1
Immunogen Type	Peptide
Immunogen Description	A synthesized peptide derived from human NDUFC1
Target Name	NDUFC1
Other Names	NDUFC1, Complex I-KFYI, KFYI, CI-KFYI, Complex I KFYI subunit
Accession No.	Swiss-Prot#: O43677NCBI Gene ID:4717
Uniprot	O43677
GeneID	4717;
Calculated MW	9kDa
Concentration	1.0mg/mL
Formulation	Liquid in 0.42% Potassium phosphate, 0.87% Sodium chloride, pH 7.3, 30% glycerol, and 0.01% sodium azide.
Storage	Store at -20°C

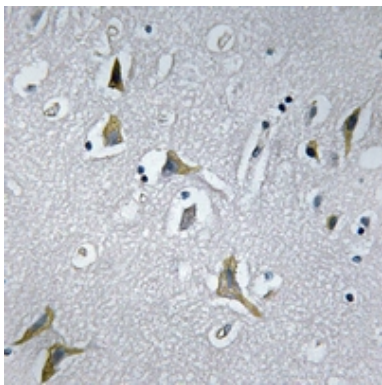
## Application Details

WB (1/500 - 1/1000), IH (1/50 - 1/200)

## Images



Western blot analysis of NDUFC1 expression in LOVO (A), SGC7901 (B), HEK293T (C), mouse kidney (D), rat brain (E) whole cell lysates.



Immunohistochemical analysis of NDUF1 staining in human brain formalin fixed paraffin embedded tissue section. The section was pre-treated using heat mediated antigen retrieval with sodium citrate buffer (pH 6.0). The section was then incubated with the antibody at room temperature and detected using an HRP conjugated compact polymer system. DAB was used as the chromogen. The section was then counterstained with haematoxylin and mounted with DPX.

---

Note: This product is for in vitro research use only