

# GPATCH2 Polyclonal Antibody

Catalog No: #29987



Package Size: #29987-1 50ul #29987-2 100ul

Orders: [order@signalwayantibody.com](mailto:order@signalwayantibody.com)  
Support: [tech@signalwayantibody.com](mailto:tech@signalwayantibody.com)

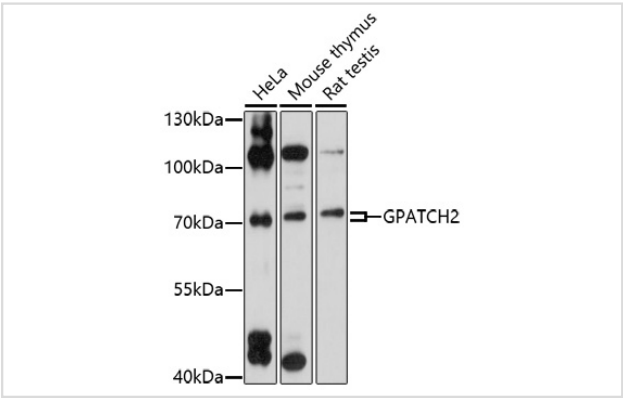
## Description

Product Name	GPATCH2 Polyclonal Antibody
Host Species	Rabbit
Clonality	Polyclonal
Isotype	IgG
Purification	Affinity purification
Applications	WB
Species Reactivity	Human,Mouse,Rat
Immunogen Description	Recombinant fusion protein of human GPATCH2 (NP_001284683.1).
Other Names	GPATCH2; CT110; GPATC2; PPP1R30; G-patch domain containing 2
Accession No.	Swiss-Prot#:Q9NW75NCBI Gene ID:55105
Uniprot	Q9NW75
GeneID	55105;
Calculated MW	Refer to figures
Formulation	Avoid freeze / thaw cycles. Buffer: PBS with 50% glycerol, pH7.4.
Storage	Store at -20°C

## Application Details

WB 1:500 - 1:2000

## Images



Western blot analysis of extracts of various cell lines, using GPATCH2 at 1:1000 dilution.

## Background

The gene encodes a nuclear factor that may play a role in spermatogenesis and in tumor growth during breast cancer. The encoded protein contains a G-patch domain with an RNA binding motif. Alternative splicing results in multiple transcript variants.

---

Note: This product is for in vitro research use only