

PPP6R3 Polyclonal Antibody

Catalog No: #29988



Package Size: #29988-1 50ul #29988-2 100ul

Orders: order@signalwayantibody.com
Support: tech@signalwayantibody.com

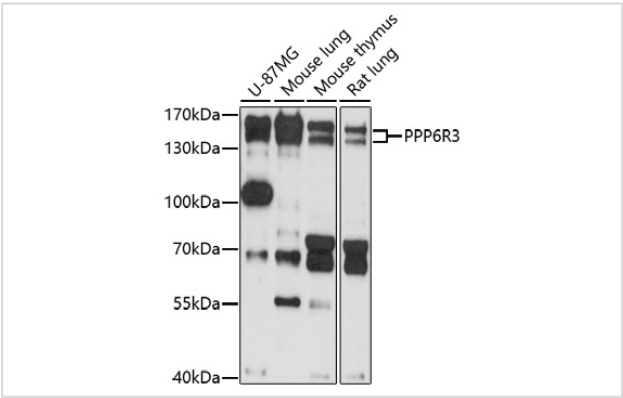
Description

Product Name	PPP6R3 Polyclonal Antibody
Host Species	Rabbit
Clonality	Polyclonal
Isotype	IgG
Purification	Affinity purification
Applications	WB
Species Reactivity	Human,Mouse,Rat
Immunogen Description	Recombinant fusion protein of human PPP6R3 (NP_060782.2).
Other Names	PPP6R3; C11orf23; PP6R3; SAP190; SAPL; SAPLa; SAPS3; protein phosphatase 6 regulatory subunit 3
Accession No.	Swiss-Prot#:Q5H9R7NCBI Gene ID:55291
Uniprot	Q5H9R7
GeneID	55291;
Calculated MW	Refer to figures
Formulation	Avoid freeze / thaw cycles. Buffer: PBS with 50% glycerol, pH7.4.
Storage	Store at -20°C

Application Details

WB 1:500 - 1:2000

Images



Western blot analysis of extracts of various cell lines, using PPP6R3 at 1:1000 dilution.

Background

Protein phosphatase regulatory subunits, such as SAPS3, modulate the activity of protein phosphatase catalytic subunits by restricting substrate specificity, recruiting substrates, and determining the intracellular localization of the holoenzyme. SAPS3 is a regulatory subunit for the protein phosphatase-6 catalytic subunit (PPP6C; MIM 612725) (Stefansson and Brautigan, 2006 [PubMed 16769727]).

Note: This product is for in vitro research use only