

## CHD7 Polyclonal Antibody

Catalog No: #29990

Package Size: #29990-1 50ul #29990-2 100ul

Orders: [order@signalwayantibody.com](mailto:order@signalwayantibody.com)Support: [tech@signalwayantibody.com](mailto:tech@signalwayantibody.com)

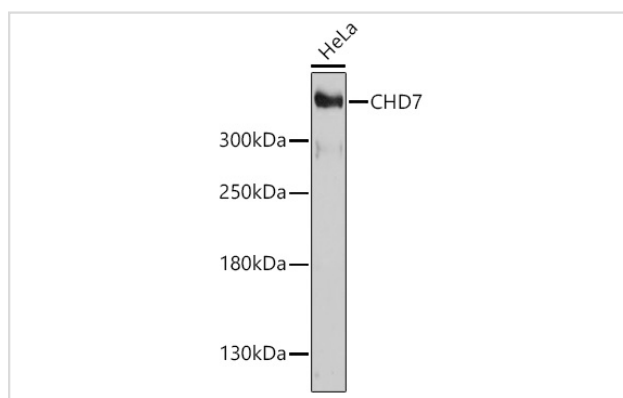
## Description

Product Name	CHD7 Polyclonal Antibody
Host Species	Rabbit
Clonality	Polyclonal
Isotype	IgG
Purification	Affinity purification
Applications	WB
Species Reactivity	Human
Immunogen Description	Recombinant fusion protein of human CHD7 (NP_060250.2).
Other Names	CHD7; CRG; HH5; IS3; KAL5; chromodomain-helicase-DNA-binding protein 7
Accession No.	Swiss-Prot#:Q9P2D1NCBI Gene ID:55636
Uniprot	Q9P2D1
GeneID	55636;
Calculated MW	335kDa
Formulation	Avoid freeze / thaw cycles. Buffer: PBS with 50% glycerol, pH7.4.
Storage	Store at -20°C

## Application Details

WB 1:500 - 1:2000

## Images



Western blot analysis of extracts of HeLa cells, using CHD7 at 1:1000 dilution.

## Background

This gene encodes a protein that contains several helicase family domains. Mutations in this gene have been found in some patients with the CHARGE syndrome. Two transcript variants encoding different isoforms have been found for this gene.

---

Note: This product is for in vitro research use only