

CLSPN Polyclonal Antibody

Catalog No: #29995



Package Size: #29995-1 50ul #29995-2 100ul

Orders: order@signalwayantibody.com
Support: tech@signalwayantibody.com

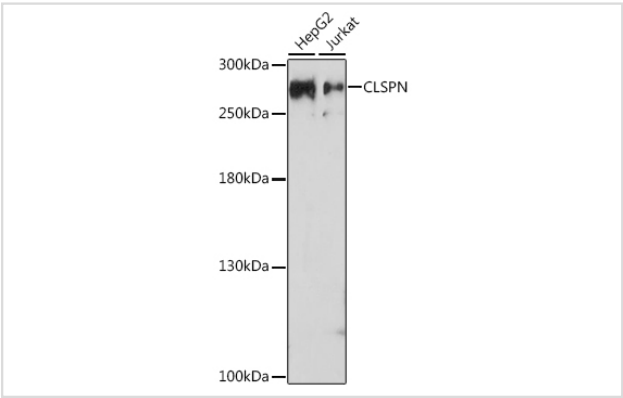
Description

| | |
|-----------------------|---|
| Product Name | CLSPN Polyclonal Antibody |
| Host Species | Rabbit |
| Clonality | Polyclonal |
| Isotype | IgG |
| Purification | Affinity purification |
| Applications | WB |
| Species Reactivity | Human |
| Immunogen Description | A synthetic peptide of human CLSPN (NP_001177410.1). |
| Other Names | CLSPN; claspin |
| Accession No. | Swiss-Prot#:Q9HAW4NCBI Gene ID:63967 |
| Uniprot | Q9HAW4 |
| GeneID | 63967; |
| Calculated MW | 275kDa |
| Formulation | Avoid freeze / thaw cycles. Buffer: PBS with 50% glycerol, pH7.4. |
| Storage | Store at -20°C |

Application Details

WB 1:500 - 1:2000

Images



Western blot analysis of extracts of various cell lines, using CLSPN at 1:1000 dilution.

Background

The product of this gene is an essential upstream regulator of checkpoint kinase 1 and triggers a checkpoint arrest of the cell cycle in response to replicative stress or DNA damage. The protein is also required for efficient DNA replication during a normal S phase. Multiple transcript variants encoding different isoforms have been found for this gene.

Note: This product is for in vitro research use only