

## PPP1R9B Polyclonal Antibody

Catalog No: #29997

Package Size: #29997-1 50ul #29997-2 100ul

Orders: [order@signalwayantibody.com](mailto:order@signalwayantibody.com)Support: [tech@signalwayantibody.com](mailto:tech@signalwayantibody.com)

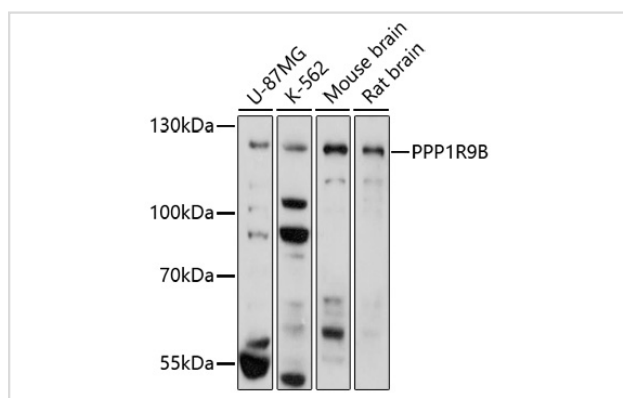
## Description

Product Name	PPP1R9B Polyclonal Antibody
Host Species	Rabbit
Clonality	Polyclonal
Isotype	IgG
Purification	Affinity purification
Applications	WB
Species Reactivity	Human,Mouse,Rat
Immunogen Description	A synthetic peptide of human PPP1R9B.
Other Names	PPP1R9B; PPP1R6; PPP1R9; SPINO; Spn; neurabin-2
Accession No.	Swiss-Prot#:Q96SB3NCBI Gene ID:84687
Uniprot	Q96SB3
GeneID	84687;
Calculated MW	Refer to figures
Formulation	Avoid freeze / thaw cycles. Buffer: PBS with 50% glycerol, pH7.4.
Storage	Store at -20°C

## Application Details

WB 1:500 - 1:2000

## Images



Western blot analysis of extracts of various cell lines, using PPP1R9B at 1:1000 dilution.

## Background

This gene encodes a scaffold protein that functions as a regulatory subunit of protein phosphatase 1a. Expression of this gene is particularly high in dendritic spines, suggesting that the encoded protein may play a role in receiving signals from the central nervous system. The encoded protein has putative tumor suppressor function and decreased expression has been observed in tumors.

---

Note: This product is for in vitro research use only