

## APOBEC3F Polyclonal Antibody

Catalog No: #30003

Package Size: #30003-1 50ul #30003-2 100ul

Orders: [order@signalwayantibody.com](mailto:order@signalwayantibody.com)Support: [tech@signalwayantibody.com](mailto:tech@signalwayantibody.com)

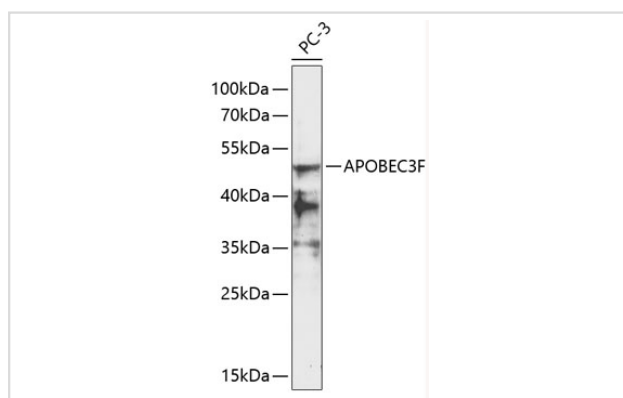
## Description

Product Name	APOBEC3F Polyclonal Antibody
Host Species	Rabbit
Clonality	Polyclonal
Isotype	IgG
Purification	Affinity purification
Applications	WB
Species Reactivity	Human
Immunogen Description	Recombinant fusion protein of human APOBEC3F (NP_660341.2).
Other Names	APOBEC3F; A3F; ARP8; BK150C2.4.MRNA; KA6; DNA dC->dU-editing enzyme APOBEC-3F
Accession No.	Swiss-Prot#:Q8IUX4NCBI Gene ID:200316
Uniprot	Q8IUX4
GeneID	200316;
Calculated MW	45kDa
Formulation	Avoid freeze / thaw cycles. Buffer: PBS with 50% glycerol, pH7.4.
Storage	Store at -20°C

## Application Details

WB 1:500 - 1:2000

## Images



Western blot analysis of extracts of PC3 cells, using APOBEC3F at 1:1000 dilution.

## Background

This gene is a member of the cytidine deaminase gene family. It is one of seven related genes or pseudogenes found in a cluster, thought to result from gene duplication, on chromosome 22. Members of the cluster encode proteins that are structurally and functionally related to the C to U RNA-editing cytidine deaminase APOBEC1. It is thought that the proteins may be RNA editing enzymes and have roles in growth or cell cycle control. Alternatively spliced transcript variants encoding different isoforms have been identified.

---

Note: This product is for in vitro research use only