

SLC26A11 Polyclonal Antibody

Catalog No: #30005



Package Size: #30005-1 50ul #30005-2 100ul

Orders: order@signalwayantibody.com
Support: tech@signalwayantibody.com

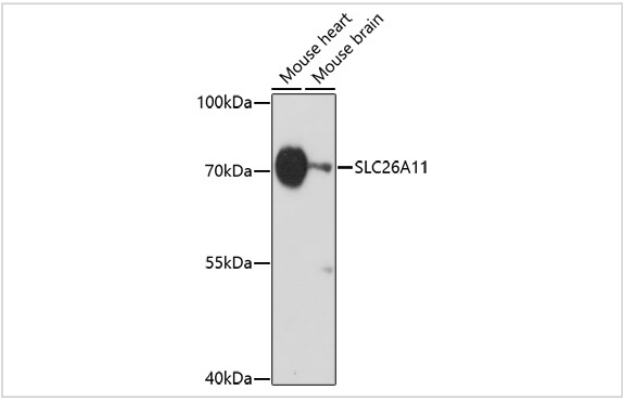
Description

Product Name	SLC26A11 Polyclonal Antibody
Host Species	Rabbit
Clonality	Polyclonal
Isotype	IgG
Purification	Affinity purification
Applications	WB
Species Reactivity	Mouse
Immunogen Description	A synthetic peptide of human SLC26A11 (NP_001159819.1).
Other Names	SLC26A11; solute carrier family 26 member 11
Accession No.	Swiss-Prot#:Q86WA9NCBI Gene ID:284129
Uniprot	Q86WA9
GeneID	284129;
Calculated MW	Refer to figures
Formulation	Avoid freeze / thaw cycles. Buffer: PBS with 50% glycerol, pH7.4.
Storage	Store at -20°C

Application Details

WB 1:500 - 1:2000

Images



Western blot analysis of extracts of various cell lines, using SLC26A11 at 1:1000 dilution.

Background

This gene encodes a member of the solute linked carrier 26 family of anion exchangers. Members of this family of proteins are essential for numerous cellular functions including homeostasis and intracellular electrolyte balance. The encoded protein is a sodium independent sulfate transporter that is sensitive to the anion exchanger inhibitor 4,4'-diisothiocyanostilbene-2,2'-disulfonic acid. Alternate splicing results in multiple transcript variants.

Note: This product is for in vitro research use only