

# LHX1 Polyclonal Antibody

Catalog No: #30019



Package Size: #30019-1 50ul #30019-2 100ul

Orders: [order@signalwayantibody.com](mailto:order@signalwayantibody.com)  
Support: [tech@signalwayantibody.com](mailto:tech@signalwayantibody.com)

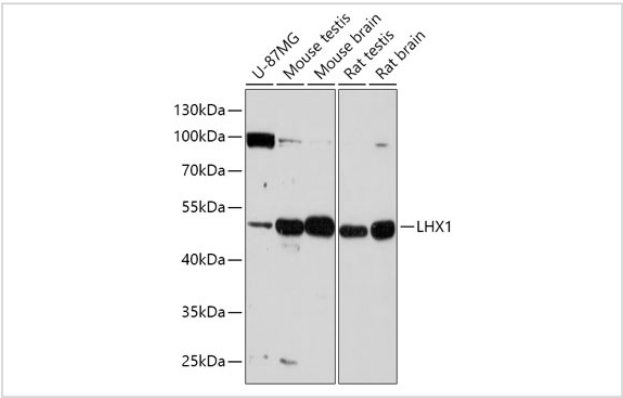
## Description

Product Name	LHX1 Polyclonal Antibody
Host Species	Rabbit
Clonality	Polyclonal
Isotype	IgG
Purification	Affinity purification
Applications	WB
Species Reactivity	Human,Mouse,Rat
Immunogen Description	Recombinant fusion protein of human LHX1 (NP_005559.2).
Other Names	LHX1; LIM-1; LIM1; LIM homeobox 1
Accession No.	Swiss-Prot#:P48742NCBI Gene ID:3975
Uniprot	P48742
GeneID	3975;
Calculated MW	52kDa
Formulation	Avoid freeze / thaw cycles. Buffer: PBS with 50% glycerol, pH7.4.
Storage	Store at -20°C

## Application Details

WB 1:500 - 1:2000

## Images



Western blot analysis of extracts of various cell lines, using LHX1 at 1:1000 dilution.

## Background

This gene encodes a member of a large protein family which contains the LIM domain, a unique cysteine-rich zinc-binding domain. The encoded protein is a transcription factor important for the development of the renal and urogenital systems. This gene is a candidate for Mayer-Rokitansky-Kuster-Hauser syndrome, a disorder characterized by anomalies in the female genital tract.

---

Note: This product is for in vitro research use only