

# ZDHHC8 Polyclonal Antibody

Catalog No: #30020



Package Size: #30020-1 50ul #30020-2 100ul

Orders: [order@signalwayantibody.com](mailto:order@signalwayantibody.com)  
Support: [tech@signalwayantibody.com](mailto:tech@signalwayantibody.com)

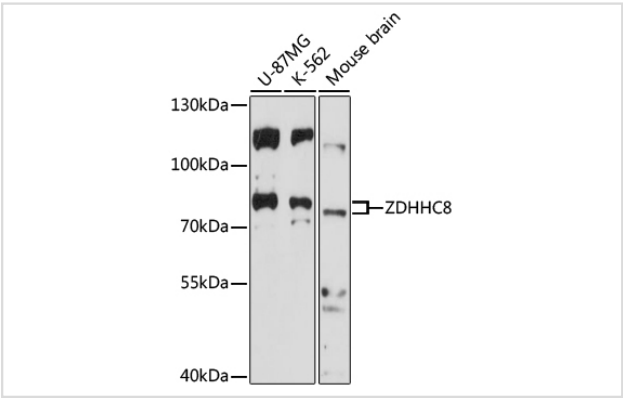
## Description

Product Name	ZDHHC8 Polyclonal Antibody
Host Species	Rabbit
Clonality	Polyclonal
Isotype	IgG
Purification	Affinity purification
Applications	WB
Species Reactivity	Human,Mouse
Immunogen Description	Recombinant fusion protein of human ZDHHC8 (NP_037505.1).
Other Names	ZDHHC8; DHHC8; ZDHHCL1; ZNF378; zinc finger DHHC-type containing 8
Accession No.	Swiss-Prot#:Q9ULC8NCBI Gene ID:29801
Uniprot	Q9ULC8
GeneID	29801;
Calculated MW	81kDa
Formulation	Avoid freeze / thaw cycles. Buffer: PBS with 50% glycerol, pH7.4.
Storage	Store at -20°C

## Application Details

WB 1:500 - 1:2000

## Images



Western blot analysis of extracts of various cell lines, using ZDHHC8 at 1:1000 dilution.

## Background

This gene encodes a four transmembrane protein that is a member of the zinc finger DHHC domain-containing protein family. The encoded protein may function as a palmitoyltransferase. Defects in this gene may be associated with a susceptibility to schizophrenia. Alternate splicing of this gene results in multiple transcript variants. A pseudogene of this gene is found on chromosome 22.

---

Note: This product is for in vitro research use only