

RAB1A Polyclonal Antibody

Catalog No: #30025



Package Size: #30025-1 50ul #30025-2 100ul

Orders: order@signalwayantibody.com
Support: tech@signalwayantibody.com

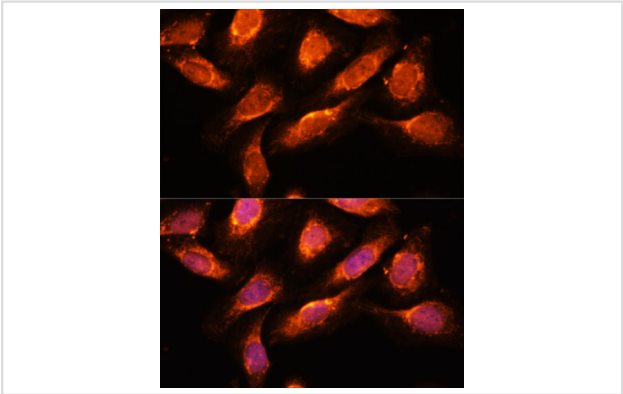
Description

Product Name	RAB1A Polyclonal Antibody
Host Species	Rabbit
Clonality	Polyclonal
Isotype	IgG
Purification	Affinity purification
Applications	WB,IHC,IF
Species Reactivity	Human,Mouse,Rat
Immunogen Description	Recombinant fusion protein of human RAB1A (NP_004152.1).
Other Names	RAB1A; RAB1; YPT1; ras-related protein Rab-1A
Accession No.	Swiss-Prot#:P62820NCBI Gene ID:5861
Uniprot	P62820
GeneID	5861;
Calculated MW	22kDa
Formulation	Avoid freeze / thaw cycles. Buffer: PBS with 50% glycerol, pH7.4.
Storage	Store at -20°C

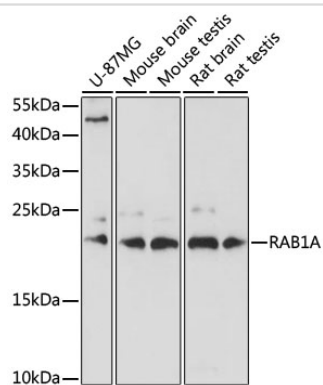
Application Details

WB 1:500 - 1:2000IHC 1:100 - 1:200IF 1:50 - 1:200

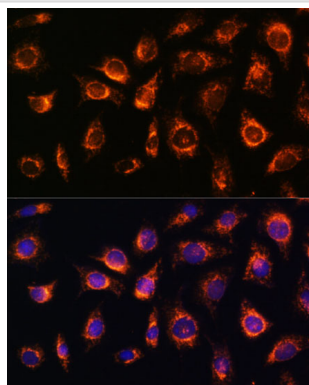
Images



Immunofluorescence analysis of U-2 OS cells using RAB1A at dilution of 1:100. Blue: DAPI for nuclear staining.



Western blot analysis of extracts of various cell lines, using RAB1A at 1:1000 dilution.



Immunofluorescence analysis of L929 cells using RAB1A at dilution of 1:100. Blue: DAPI for nuclear staining.

Background

This gene encodes a member of the Ras superfamily of GTPases. Members of the gene family cycle between inactive GDP-bound and active GTP-bound forms. This small GTPase controls vesicle traffic from the endoplasmic reticulum to the Golgi apparatus. Multiple alternatively spliced transcript variants have been identified for this gene which encode different protein isoforms.

Note: This product is for in vitro research use only