

## CLCN6 Polyclonal Antibody

Catalog No: #30044

Package Size: #30044-1 50ul #30044-2 100ul

Orders: [order@signalwayantibody.com](mailto:order@signalwayantibody.com)Support: [tech@signalwayantibody.com](mailto:tech@signalwayantibody.com)

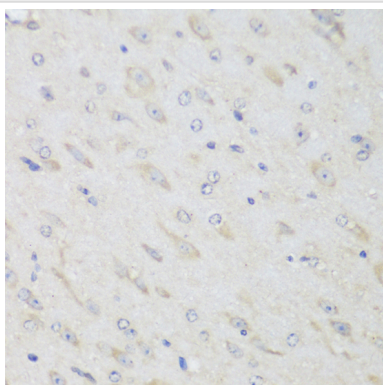
## Description

Product Name	CLCN6 Polyclonal Antibody
Host Species	Rabbit
Clonality	Polyclonal
Isotype	IgG
Purification	Affinity purification
Applications	IHC
Species Reactivity	Mouse
Immunogen Description	Recombinant fusion protein of human CLCN6 (NP_001277.1).
Other Names	CLC-6
Accession No.	Swiss-Prot#:P51797NCBI Gene ID:1185
Uniprot	P51797
GeneID	1185;
Calculated MW	Refer to figures
Formulation	Avoid freeze / thaw cycles. Buffer: PBS with 50% glycerol, pH7.4.
Storage	Store at -20°C

## Application Details

IHC□1:50 - 1:100

## Images



Immunohistochemistry of paraffin-embedded mouse brain using CLCN6 at dilution of 1:150 (40x lens).

## Background

This gene encodes a member of the voltage-dependent chloride channel protein family. Members of this family can function as either chloride channels or antiporters. This protein is primarily localized to late endosomes and functions as a chloride/proton antiporter. Alternate splicing results in both coding and non-coding variants. Additional alternately spliced variants have been described but their full-length structure is unknown. [provided by RefSeq, Mar 2012]

---

Note: This product is for in vitro research use only