

## DPH2 Polyclonal Antibody

Catalog No: #30046

Package Size: #30046-1 50ul #30046-2 100ul

Orders: [order@signalwayantibody.com](mailto:order@signalwayantibody.com)Support: [tech@signalwayantibody.com](mailto:tech@signalwayantibody.com)

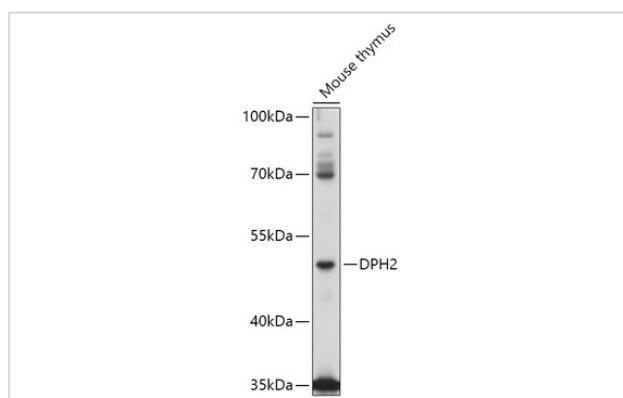
## Description

Product Name	DPH2 Polyclonal Antibody
Host Species	Rabbit
Clonality	Polyclonal
Isotype	IgG
Purification	Affinity purification
Applications	WB
Species Reactivity	Mouse
Immunogen Description	Recombinant fusion protein of human DPH2 (NP_001375.2).
Other Names	DPH2L2
Accession No.	Swiss-Prot#:Q9BQC3NCBI Gene ID:1802
Uniprot	Q9BQC3
GeneID	1802;
Calculated MW	50kDa
Formulation	Avoid freeze / thaw cycles. Buffer: PBS with 50% glycerol, pH7.4.
Storage	Store at -20°C

## Application Details

WB□1:500 - 1:2000

## Images



Western blot analysis of extracts of Mouse thymus, using DPH2 at 1:1000 dilution.

## Background

This gene is one of two human genes similar to the yeast gene dph2. The yeast gene was identified by its ability to complement a diphthamide mutant strain, and thus probably functions in diphthamide biosynthesis. Diphthamide is a post-translationally modified histidine residue present in elongation factor 2 (EF2) that is the target of diphtheria toxin ADP-ribosylation. Multiple transcript variants encoding different isoforms have been found for this gene. [provided by RefSeq, Jan 2016]

---

Note: This product is for in vitro research use only