

FCGR1B Polyclonal Antibody

Catalog No: #30050



Package Size: #30050-1 50ul #30050-2 100ul

Orders: order@signalwayantibody.com
Support: tech@signalwayantibody.com

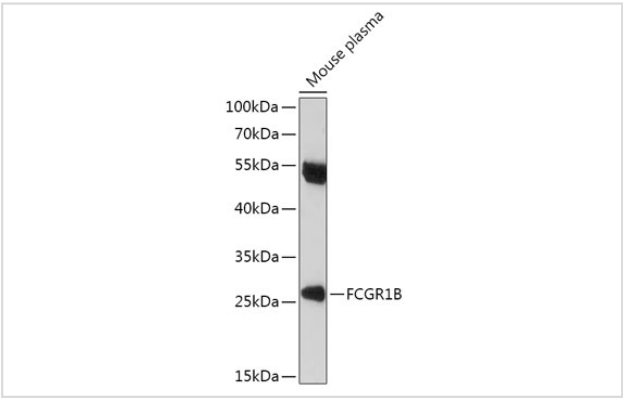
Description

Product Name	FCGR1B Polyclonal Antibody
Host Species	Rabbit
Clonality	Polyclonal
Isotype	IgG
Purification	Affinity purification
Applications	WB,IHC
Species Reactivity	Human,Mouse
Immunogen Description	A synthetic peptide of Human FCGR1B.
Other Names	CD64b, IGFRB
Accession No.	Swiss-Prot#:Q92637NCBI Gene ID:2210
Uniprot	Q92637
GeneID	2210;
Calculated MW	27kDa
Formulation	Avoid freeze / thaw cycles. Buffer: PBS with 50% glycerol, pH7.4.
Storage	Store at -20°C

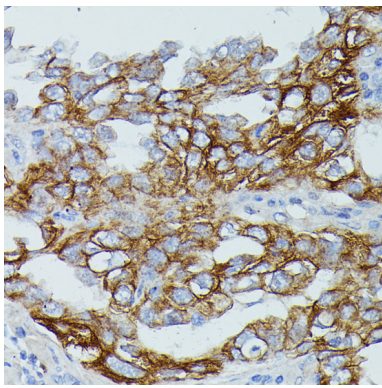
Application Details

WB 1:500 - 1:2000IHC 1:50 - 1:200

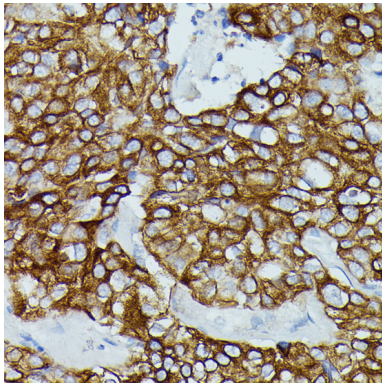
Images



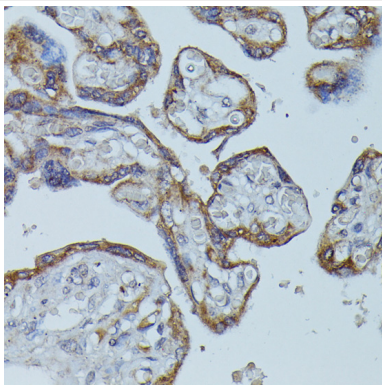
Western blot analysis of extracts of Mouse plasma, using FCGR1B at 1:1000 dilution.



Immunohistochemistry of paraffin-embedded human lung cancer using FCGR1B at dilution of 1:100 (40x lens).



Immunohistochemistry of paraffin-embedded human mammary cancer using FCGR1B at dilution of 1:100 (40x lens).



Immunohistochemistry of paraffin-embedded human placenta using FCGR1B at dilution of 1:100 (40x lens).

Background

Three distinct, but closely related classes of receptors that bind the Fc portion of IgG have been identified (FcγRI, II and III). The FcγRI family consists of three closely related genes termed A, B, and C. This gene encodes the low affinity FcγRIIB receptor that may play an important role in humoral immune response. Alternatively spliced transcript variants encoding different isoforms have been described for this gene. [provided by RefSeq, Oct 2011]

Note: This product is for in vitro research use only