

ICA1 Polyclonal Antibody

Catalog No: #30055



Package Size: #30055-1 50ul #30055-2 100ul

Orders: order@signalwayantibody.com
Support: tech@signalwayantibody.com

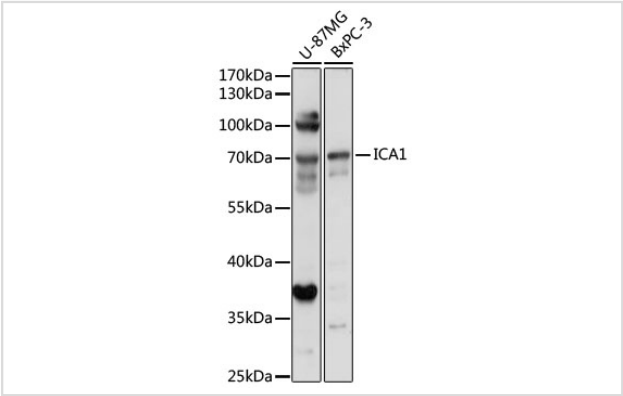
Description

Product Name	ICA1 Polyclonal Antibody
Host Species	Rabbit
Clonality	Polyclonal
Isotype	IgG
Purification	Affinity purification
Applications	WB,IHC
Species Reactivity	Human
Immunogen Description	Recombinant fusion protein of human ICA1 (NP_001263407).
Other Names	ICA69;ICAp69;ICA1
Accession No.	Uniprot:Q05084GenelD:3382
Uniprot	Q05084
GenelD	3382
Calculated MW	69kDa
SDS-PAGE MW	69kDa
Formulation	PBS with 0.02% sodium azide,50% glycerol,pH7.3.
Storage	Store at -20°C. Avoid freeze / thaw cycles.

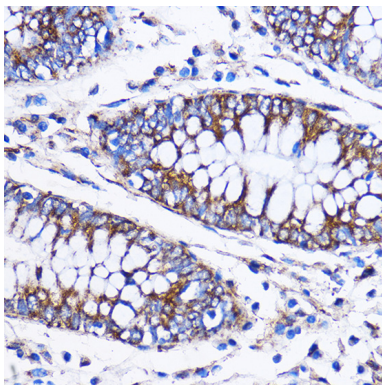
Application Details

WB 1:500 - 1:2000IHC 1:50 - 1:200

Images



Western blot analysis of extracts of various cell lines, using ICA1 antibody.



Immunohistochemistry of paraffin-embedded Human colon using ICA1 Rabbit pAb.

Background

This gene encodes a protein with an arfaptin homology domain that is found both in the cytosol and as membrane-bound form on the Golgi complex and immature secretory granules. This protein is believed to be an autoantigen in insulin-dependent diabetes mellitus and primary Sjogren's syndrome. Several transcript variants encoding two different isoforms have been found for this gene. [provided by RefSeq, Feb 2013]

Note: This product is for in vitro research use only