

LBP Polyclonal Antibody

Catalog No: #30057



Package Size: #30057-1 50ul #30057-2 100ul

Orders: order@signalwayantibody.com
Support: tech@signalwayantibody.com

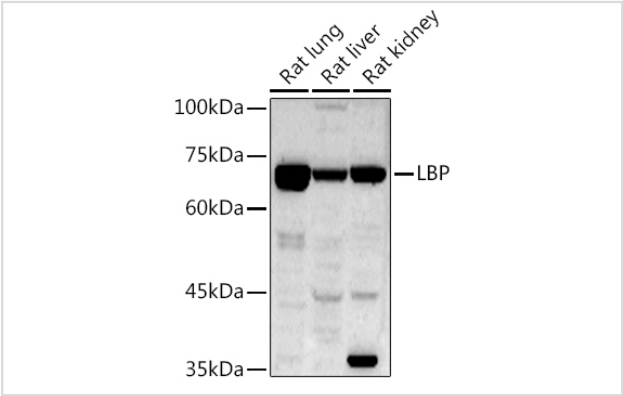
Description

| | |
|-----------------------|---|
| Product Name | LBP Polyclonal Antibody |
| Host Species | Rabbit |
| Clonality | Polyclonal |
| Isotype | IgG |
| Purification | Affinity purification |
| Applications | WB,IF |
| Species Reactivity | Human,Mouse,Rat |
| Immunogen Description | Recombinant fusion protein of Human LBP. |
| Other Names | BPIFD2;LBP |
| Accession No. | Uniprot:P18428GenelD:3929 |
| Uniprot | P18428 |
| GenelD | 3929 |
| Calculated MW | Refer to figures |
| SDS-PAGE MW | 67KDa |
| Formulation | PBS with 0.02% sodium azide,50% glycerol,pH7.3. |
| Storage | Store at -20°C. Avoid freeze / thaw cycles. |

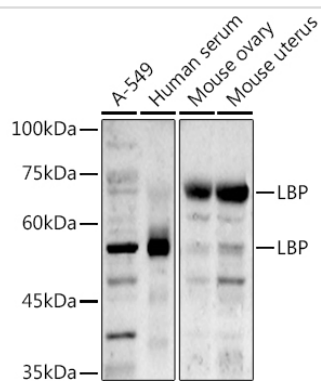
Application Details

WB 1:500 - 1:2000IF 1:50 - 1:200

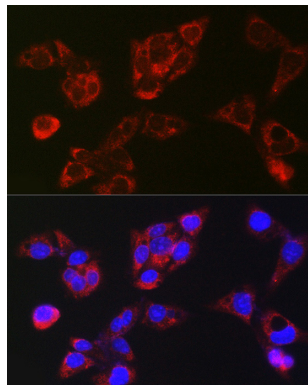
Images



Western blot analysis of extracts of various cell lines, using LBP antibody.



Western blot analysis of extracts of various cell lines, using LBP antibody.



Immunofluorescence analysis of HepG2 cells using LBP Rabbit pAb.

Background

The protein encoded by this gene is involved in the acute-phase immunologic response to gram-negative bacterial infections. Gram-negative bacteria contain a glycolipid, lipopolysaccharide (LPS), on their outer cell wall. Together with bactericidal permeability-increasing protein (BPI), the encoded protein binds LPS and interacts with the CD14 receptor, probably playing a role in regulating LPS-dependent monocyte responses. Studies in mice suggest that the encoded protein is necessary for the rapid acute-phase response to LPS but not for the clearance of LPS from circulation. This protein is part of a family of structurally and functionally related proteins, including BPI, plasma cholesteryl ester transfer protein (CETP), and phospholipid transfer protein (PLTP). [provided by RefSeq, Apr 2012]

Note: This product is for in vitro research use only