

# PPP1R12B Polyclonal Antibody

Catalog No: #30059



Package Size: #30059-1 50ul #30059-2 100ul

Orders: [order@signalwayantibody.com](mailto:order@signalwayantibody.com)  
Support: [tech@signalwayantibody.com](mailto:tech@signalwayantibody.com)

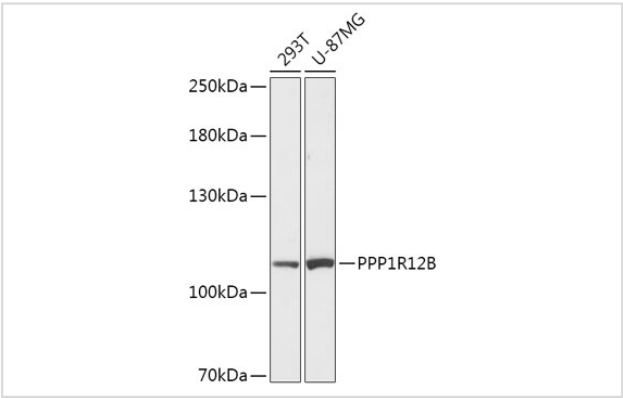
## Description

Product Name	PPP1R12B Polyclonal Antibody
Host Species	Rabbit
Clonality	Polyclonal
Isotype	IgG
Purification	Affinity purification
Applications	WB
Species Reactivity	Human
Immunogen Description	Recombinant fusion protein of human PPP1R12B (NP_002472.2).
Other Names	MYPT2, PP1bp55
Accession No.	Swiss-Prot#:O60237NCBI Gene ID:4660
Uniprot	O60237
GeneID	4660;
Calculated MW	110kDa
Formulation	Avoid freeze / thaw cycles. Buffer: PBS with 50% glycerol, pH7.4.
Storage	Store at -20°C

## Application Details

WB 1:500 - 1:2000

## Images



Western blot analysis of extracts of various cell lines, using PPP1R12B at 1:1000 dilution.

## Background

Myosin phosphatase is a protein complex comprised of three subunits: a catalytic subunit (PP1c-delta, protein phosphatase 1, catalytic subunit delta), a large regulatory subunit (MYPT, myosin phosphatase target) and small regulatory subunit (sm-M20). Two isoforms of MYPT have been isolated--MYPT1 and MYPT2, the first of which is widely expressed, and the second of which may be specific to heart, skeletal muscle, and brain. Each of the MYPT isoforms functions to bind PP1c-delta and increase phosphatase activity. This locus encodes both MYTP2 and M20. Alternatively

spliced transcript variants encoding different isoforms have been identified. Related pseudogenes have been defined on the Y chromosome. [provided by RefSeq, Oct 2011]

---

Note: This product is for in vitro research use only