

# TBCC Polyclonal Antibody

Catalog No: #30070



Package Size: #30070-1 50ul #30070-2 100ul

Orders: [order@signalwayantibody.com](mailto:order@signalwayantibody.com)  
Support: [tech@signalwayantibody.com](mailto:tech@signalwayantibody.com)

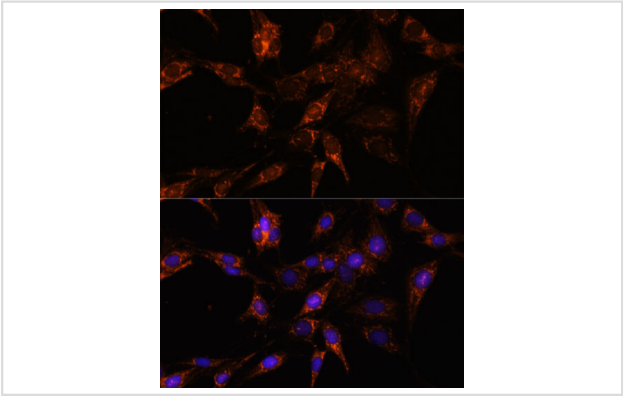
## Description

Product Name	TBCC Polyclonal Antibody
Host Species	Rabbit
Clonality	Polyclonal
Isotype	IgG
Purification	Affinity purification
Applications	WB,IF
Species Reactivity	Human,Mouse,Rat
Immunogen Description	Recombinant fusion protein of human TBCC (NP_003183.1).
Other Names	CFC
Accession No.	Swiss-Prot#:Q15814NCBI Gene ID:6903
Uniprot	Q15814
GeneID	6903;
Calculated MW	39kDa
Formulation	Avoid freeze / thaw cycles. Buffer: PBS with 50% glycerol, pH7.4.
Storage	Store at -20°C

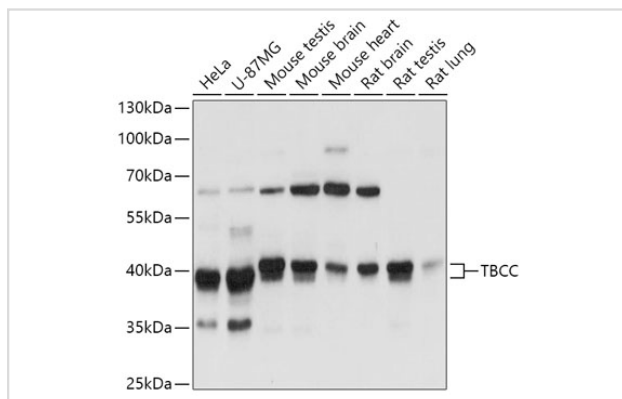
## Application Details

WB 1:500 - 1:2000IF 1:50 - 1:200

## Images



Immunofluorescence analysis of C6 cells using TBCC at dilution of 1:100. Blue: DAPI for nuclear staining.



Western blot analysis of extracts of various cell lines, using TBCC at 1:3000 dilution.

## Background

Cofactor C is one of four proteins (cofactors A, D, E, and C) involved in the pathway leading to correctly folded beta-tubulin from folding intermediates. Cofactors A and D are believed to play a role in capturing and stabilizing beta-tubulin intermediates in a quasi-native confirmation. Cofactor E binds to the cofactor D/beta-tubulin complex; interaction with cofactor C then causes the release of beta-tubulin polypeptides that are committed to the native state. [provided by RefSeq, Jul 2008]

Note: This product is for in vitro research use only