

OFD1 Polyclonal Antibody

Catalog No: #30078



Package Size: #30078-1 50ul #30078-2 100ul

Orders: order@signalwayantibody.com
Support: tech@signalwayantibody.com

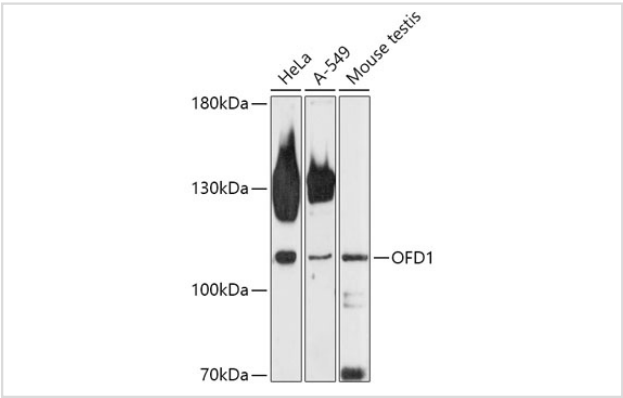
Description

Product Name	OFD1 Polyclonal Antibody
Host Species	Rabbit
Clonality	Polyclonal
Isotype	IgG
Purification	Affinity purification
Applications	WB
Species Reactivity	Human,Mouse
Immunogen Description	Recombinant fusion protein of human OFD1 (NP_003602.1).
Other Names	71-7A, CXorf5, JBTS10, RP23, SGBS2
Accession No.	Swiss-Prot#:O75665NCBI Gene ID:8481
Uniprot	O75665
GeneID	8481;
Calculated MW	117kDa
Formulation	Avoid freeze / thaw cycles. Buffer: PBS with 50% glycerol, pH7.4.
Storage	Store at -20°C

Application Details

WB 1:500 - 1:2000

Images



Western blot analysis of extracts of various cell lines, using OFD1 at 1:1000 dilution.

Background

This gene is located on the X chromosome and encodes a centrosomal protein. A knockout mouse model has been used to study the effect of mutations in this gene. The mouse gene is also located on the X chromosome, however, unlike the human gene it is not subject to X inactivation. Mutations in this gene are associated with oral-facial-digital syndrome type I and Simpson-Golabi-Behmel syndrome type 2. Many pseudogenes have been identified; a single pseudogene is found on chromosome 5 while as many as fifteen have been found on the Y chromosome. [provided by

Note: This product is for in vitro research use only