

MGAM Polyclonal Antibody

Catalog No: #30084



Package Size: #30084-1 50ul #30084-2 100ul

Orders: order@signalwayantibody.com
Support: tech@signalwayantibody.com

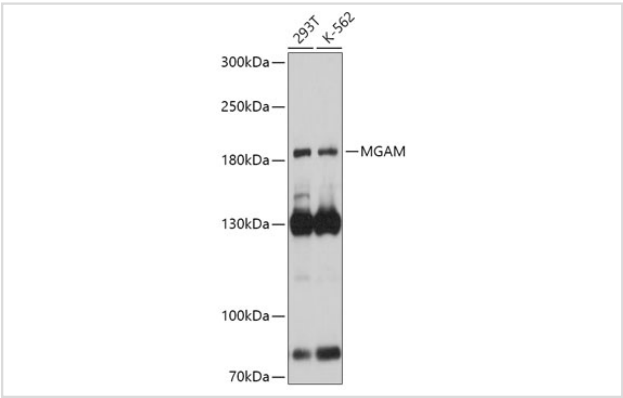
Description

Product Name	MGAM Polyclonal Antibody
Host Species	Rabbit
Clonality	Polyclonal
Isotype	IgG
Purification	Affinity purification
Applications	WB
Species Reactivity	Human
Immunogen Description	Recombinant fusion protein of human MGAM (NP_004659.2).
Other Names	MG, MGA
Accession No.	Swiss-Prot#:O43451NCBI Gene ID:8972
Uniprot	O43451
GeneID	8972;
Calculated MW	190kDa
Formulation	Avoid freeze / thaw cycles.[Buffer: PBS with 50% glycerol, pH7.4.
Storage	Store at -20°C

Application Details

WB 1:500 - 1:2000

Images



Western blot analysis of extracts of various cell lines, using MGAM at 1:1000 dilution.

Background

This gene encodes maltase-glucoamylase, which is a brush border membrane enzyme that plays a role in the final steps of digestion of starch. The protein has two catalytic sites identical to those of sucrase-isomaltase, but the proteins are only 59% homologous. Both are members of glycosyl hydrolase family 31, which has a variety of substrate specificities. [provided by RefSeq, Jul 2008]

Note: This product is for in vitro research use only