

SCAMP2 Polyclonal Antibody

Catalog No: #30092



Package Size: #30092-1 50ul #30092-2 100ul

Orders: order@signalwayantibody.com
Support: tech@signalwayantibody.com

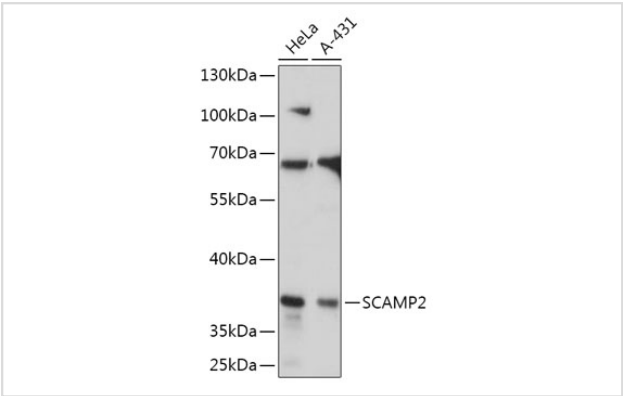
Description

Product Name	SCAMP2 Polyclonal Antibody
Host Species	Rabbit
Clonality	Polyclonal
Isotype	IgG
Purification	Affinity purification
Applications	WB,IF
Species Reactivity	Human,Mouse,Rat
Immunogen Description	Recombinant fusion protein of human SCAMP2 (NP_005688.2).
Accession No.	Swiss-Prot#:O15127NCBI Gene ID:10066
Uniprot	O15127
GeneID	10066;
Calculated MW	37kDa
Formulation	Avoid freeze / thaw cycles. Buffer: PBS with 50% glycerol, pH7.4.
Storage	Store at -20°C

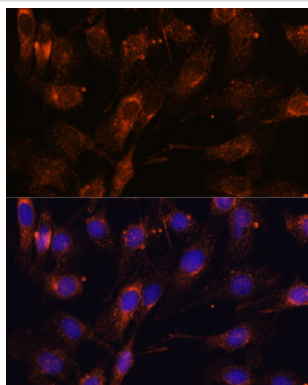
Application Details

WB 1:500 - 1:2000IF 1:50 - 1:200

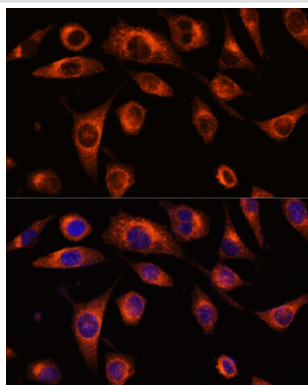
Images



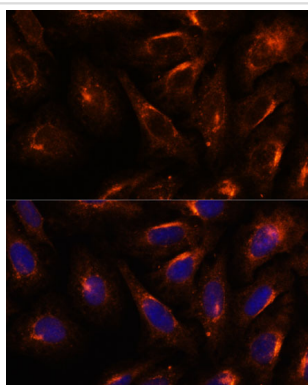
Western blot analysis of extracts of various cell lines, using SCAMP2 at 1:1000 dilution.



Immunofluorescence analysis of C6 cells using SCAMP2 at dilution of 1:100. Blue: DAPI for nuclear staining.



Immunofluorescence analysis of L929 cells using SCAMP2 at dilution of 1:100. Blue: DAPI for nuclear staining.



Immunofluorescence analysis of U-2 OS cells using SCAMP2 at dilution of 1:100. Blue: DAPI for nuclear staining.

Background

This gene product belongs to the SCAMP family of proteins which are secretory carrier membrane proteins. They function as carriers to the cell surface in post-golgi recycling pathways. Different family members are highly related products of distinct genes, and are usually expressed together. These findings suggest that the SCAMPs may function at the same site during vesicular transport rather than in separate pathways. Alternate splicing results in multiple transcript variants. [provided by RefSeq, Mar 2016]

Note: This product is for in vitro research use only