

ANKLE2 Polyclonal Antibody

Catalog No: #30109

Package Size: #30109-1 50ul #30109-2 100ul

Orders: order@signalwayantibody.comSupport: tech@signalwayantibody.com

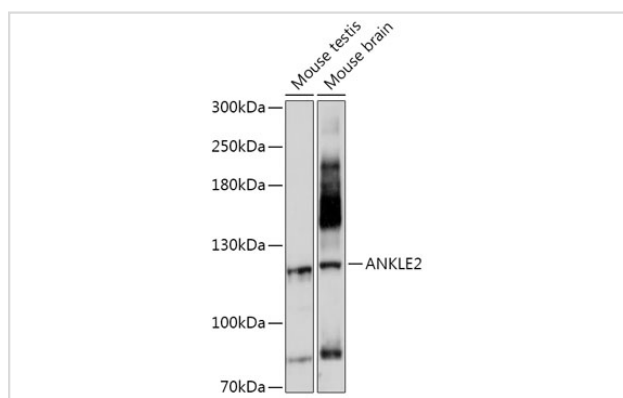
Description

Product Name	ANKLE2 Polyclonal Antibody
Host Species	Rabbit
Clonality	Polyclonal
Isotype	IgG
Purification	Affinity purification
Applications	WB
Species Reactivity	Mouse,Rat
Immunogen Description	Recombinant fusion protein of human ANKLE2 (NP_055929.1).
Other Names	KIAA0692, LEMD7, Lem4, MCPH16
Accession No.	Swiss-Prot#:Q86XL3NCBI Gene ID:23141
Uniprot	Q86XL3
GeneID	23141;
Calculated MW	104kDa
Formulation	Avoid freeze / thaw cycles. Buffer: PBS with 50% glycerol, pH7.4.
Storage	Store at -20°C

Application Details

WB 1:500 - 1:2000

Images



Western blot analysis of extracts of various cell lines, using ANKLE2 at 1:1000 dilution.

Background

This gene encodes a member of the LEM family of inner nuclear membrane proteins. The encoded protein functions as a mitotic regulator through postmitotic formation of the nuclear envelope. Mutations in this gene cause morphology defects in the nuclear envelope and BAF hyperphosphorylation. [provided by RefSeq, Mar 2014]

Note: This product is for in vitro research use only