

RTF1 Polyclonal Antibody

Catalog No: #30110

Package Size: #30110-1 50ul #30110-2 100ul

Orders: order@signalwayantibody.com

Support: tech@signalwayantibody.com

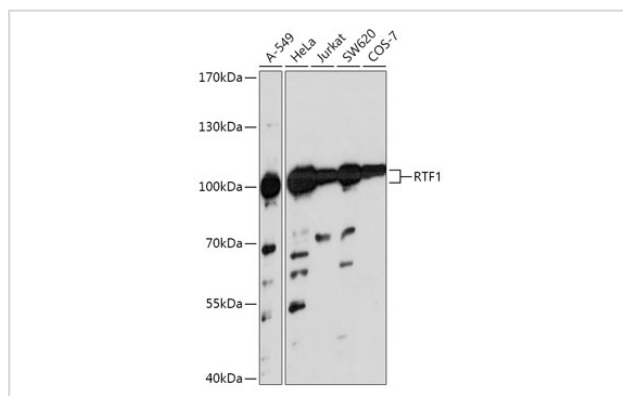
Description

Product Name	RTF1 Polyclonal Antibody
Host Species	Rabbit
Clonality	Polyclonal
Isotype	IgG
Purification	Affinity purification
Applications	WB
Species Reactivity	Human,Mouse
Immunogen Description	A synthetic peptide of human RTF1 (NP_055953.3).
Other Names	GTL7, KIAA0252
Accession No.	Swiss-Prot#:Q92541NCBI Gene ID:23168
Uniprot	Q92541
GeneID	23168;
Calculated MW	100kDa
Formulation	Avoid freeze / thaw cycles. Buffer: PBS with 50% glycerol, pH7.4.
Storage	Store at -20°C

Application Details

WB 1:500 - 1:2000

Images



Western blot analysis of extracts of various cell lines, using RTF1 at 1:1000 dilution.

Background

This locus may represent a gene involved in regulation of transcription elongation and chromatin remodeling, based on studies of similar proteins in other organisms. The encoded protein may bind single-stranded DNA. [provided by RefSeq, Sep 2010]

Note: This product is for in vitro research use only