

# STEAP1 Polyclonal Antibody

Catalog No: #30124



Package Size: #30124-1 50ul #30124-2 100ul

Orders: [order@signalwayantibody.com](mailto:order@signalwayantibody.com)  
Support: [tech@signalwayantibody.com](mailto:tech@signalwayantibody.com)

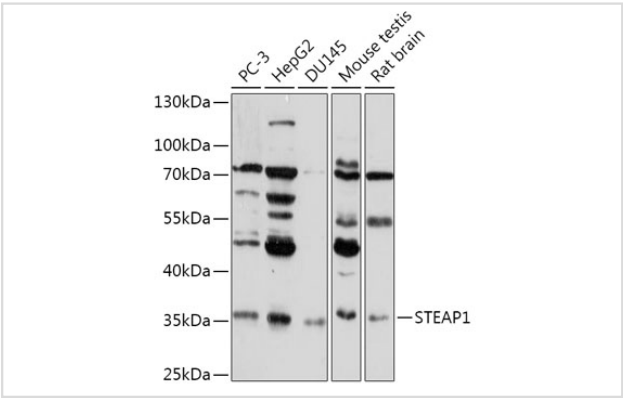
## Description

Product Name	STEAP1 Polyclonal Antibody
Host Species	Rabbit
Clonality	Polyclonal
Isotype	IgG
Purification	Affinity purification
Applications	WB
Species Reactivity	Human,Mouse,Rat
Immunogen Description	Recombinant fusion protein of human STEAP1 (NP_036581.1).
Other Names	PRSS24, STEAP
Accession No.	Swiss-Prot#:Q9UHE8NCBI Gene ID:26872
Uniprot	Q9UHE8
GeneID	26872;
Calculated MW	40kDa
Formulation	Avoid freeze / thaw cycles. Buffer: PBS with 50% glycerol, pH7.4.
Storage	Store at -20°C

## Application Details

WB 1:500 - 1:2000

## Images



Western blot analysis of extracts of various cell lines, using STEAP1 at 1:1000 dilution.

## Background

This gene is predominantly expressed in prostate tissue, and is found to be upregulated in multiple cancer cell lines. The gene product is predicted to be a six-transmembrane protein, and was shown to be a cell surface antigen significantly expressed at cell-cell junctions. [provided by RefSeq, Jul 2008]

---

Note: This product is for in vitro research use only